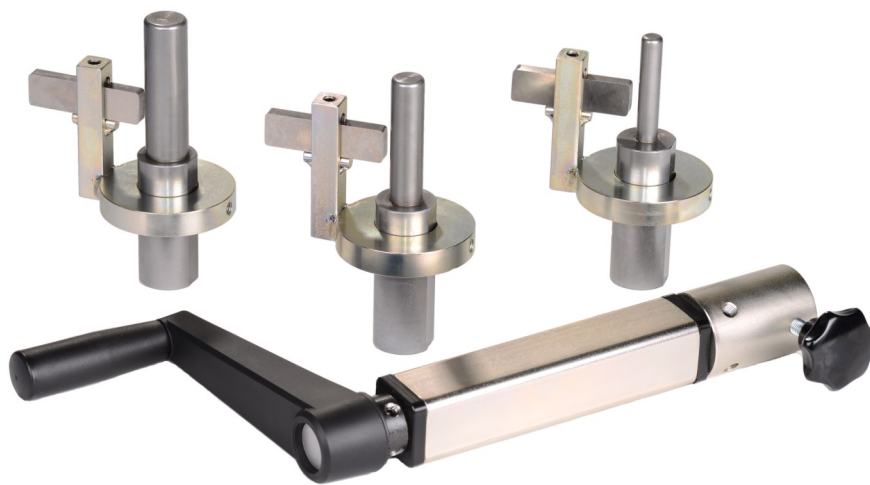


# HS 50 M



Tête de dénudage pas incl.

## SPÉCIFICATIONS

<b>Capacité</b>	2" (interne & externe)
<b>Contrôle</b>	Manuel
<b>Poids (kg)</b>	2.255
<b>Dimensions (LxPxH mm)</b>	415 x 235 x 50

## TÊTES DE DÉNUDAGE

Externe	Portée (mm)
3/16"	0-55
1/4"	0-55
5/16"	0-55
3/8"	0-55
1/2"	0-55
5/8"	0-55
3/4"	0-55
1"	0-55 / 50-90
1 1/4"	0-55 / 50-90
1 1/2"	0-55 / 50-90
2"	50-90
Interne	Portée
3/8"	adaptable ⇄
1/2"	adaptable ⇄
5/8"	adaptable ⇄
3/4"	adaptable ⇄
1"	adaptable ⇄
1 1/4"	adaptable ⇄
1 1/2"	adaptable ⇄
2"	adaptable ⇄