

aeoi[®]

clamps



staffe e collari per fissare tubi
clamps for all clamping applications

Staffe e collari per fissare tubi

Clamps for all clamping applications

Introduzione <i>Introduction</i>	2
Suggerimenti per il montaggio <i>Mounting details</i>	4
Programma di produzione <i>Production program</i>	6
Collari serie standard in polipropilene, poliammide autoestinguente, gomma o alluminio <i>Standard clamps in polypropylene, self-extinguishing polyamide, rubber or aluminium</i>	7
Collari serie standard con piastra superiore in polipropilene, poliammide autoestinguente, gomma o alluminio <i>Standard clamps with upper plate in polypropylene, self-extinguishing polyamide, rubber or aluminium</i>	10
Collari doppi in polipropilene, poliammide autoestinguente o gomma <i>Double clamps in polypropylene, self-extinguishing polyamide or rubber</i>	11
Collari serie pesante in polipropilene, poliammide autoestinguente, alluminio o gomma <i>Heavy duty clamps in polypropylene, self-extinguishing polyamide, aluminium or rubber</i>	14
Piastre doppie per serie pesante <i>Double plates for heavy duty series</i>	19
Collari doppi serie pesante in polipropilene o poliammide autoestinguente <i>Heavy duty double clamps in polypropylene and self-extinguishing polyamid</i>	20
Piastre speciali per serie standard <i>Special plates for standard series</i>	21
Collari serie standard per tubi gemellati <i>Standard series clamps for twin tubes</i>	22
Elementi di fissaggio per tubi rigidi, flessibili e cavi elettrici <i>Clamps for hoses, pipes, tubes and cables</i>	23
Supporto tra tubo e cilindro <i>Pipe clamp for cylinder</i>	24
Caratteristiche materiali <i>Materials properties</i>	25

Introduzione

Le staffe ed i collari AEGI rappresentano il sistema più semplice, veloce e razionale per fissare tubi, sia rigidi che flessibili, in qualsiasi campo industriale, navale, elettrico.

Le staffe e i collari AEGI sono di facile impiego e permettono di fissare tubi, cavi elettrici, guaine, canaline, ecc., in modo sicuro, rapido ed economico.

Esteticamente e tecnicamente valide, possono venir agganciate con la massima facilità su qualsiasi tipo di struttura fissa per mezzo di guide saldabili.

- Tutti i particolari sono costruiti con riferimento alle norme DIN 3015, edizione gennaio 1999.

I collari delle staffe AEGI vengono prodotti nei seguenti materiali:

- Polipropilene copolimero - di colore verde - per la serie standard, pesante e doppia
- Poliammide - di colore nero - (Nylon 6-6 caricato al 20% con fibra di vetro, autoestinguente VO), per la serie standard, pesante e doppia
- Alluminio, per la serie leggera e pesante
- Gomma - di colore nero - per serie standard e pesante.

Gli altri componenti delle staffe vengono prodotti, di serie, con i seguenti materiali:

- Piastra inf. e sup.: acciaio FE 36
- Viti e rondelle: acciaio A6S
- Binari o canaline: acciaio FE 36

Tutte le parti metalliche sono fornite in Acciaio Inox 316L. A richiesta Inox 304 e Inox 316.

Introduction

AEGI clamps are a sensible and easy way of securing piping and hoses in all type of industries and on all types of terrestrial and marine installations.

AEGI clamps characteristics are:

- manufactured with reference to DIN 3015, edition january 1999
- pleasant, practical and economical design
- using weldable plates or guides, it's easy to anchor the clamps to machinery and steelwork
- fast, safe, economic installation and service in piping systems

AEGI pipe clamps are manufactured in:

- Polypropylene - green colour - for standard, heavy duty and double series
- Polyamide - black colour - (Nylon 6-6 loaded with 20% of fiberglass self-extinguishing VO) for standard, heavy duty and double series
- Aluminium for standard and heavy duty series
- Rubber - black colour - for standard and heavy duty series

The other metallic components of the clamps are manufactured in:

- Lower and upper plate: Steel FE 36
- Screw and washer: Steel A6S
- Rail: Steel FE 36

We produce and stock all metallic parts in stainless 316L. On request stainless steel 304 and 316.

Einführung

AEGI-Schlauchschellen sind ein einfacher Weg zur sicheren Befestigung von Rohren und Schläuchen bei allen industriellen Installationen.

Vorteile der AEGI-Schlauchschellen:

- praktische, wirtschaftliche Konstruktion
- anschweißbare Platten, dadurch einfaches Anbringen an Maschinen und Stahlgerüsten
- schnelle, sichere, wirtschaftliche Installation und Wartung bei Rohrsystemen

AEGI-Schlauchschellen werden DIN 3015 hergestellt aus:

- Polypropylen - Farbe grün - für Standardreihe, schwere Reihe und Doppelreihe
- Polyamid mit 20% GFK - Anteil - Farbe schwarz - für Standard Reihe, schwere Reihe und Doppel Reihe
- Aluminium für Standard Reihe und schwere Reihe
- Gummi - Farbe Schwarz für standard und schwere Reihe

Die anderen Metallkomponenten der Schlauchschellen werden aus Normalstahl hergestellt.

Auf Anfrage können wir auch alle Metallteile in Edelstahl 304 - 316 - 316L herstellen.

Introduction

Les colliers de fixation AEGI constituent un moyen pratique, rapide et facile pour la fixation des tuyaux, qu'ils soient rigides ou souples, dans n'importe quel domaine industriel, naval ou électrique.

Les colliers de fixation AEGI sont d'un emploi facile et permettent de fixer les tuyaux, câbles électriques, gaines, canalisations, etc.. de manière sûre, rapide et économique.

Leur conception esthétique et technique permet de les accrocher très facilement sur tout type de structure fixe au moyen de glissières à souder.

Les colliers AEGI sont fabriqués en référence aux normes DIN 3015, édition janvier 1999, dans les matériaux suivants:

- Copolymère de polypropylène - de couleur verte - pour les séries standard, à charges lourdes et colliers doubles
- Polyamide - de couleur noire (nylon 6-6 renforcé de fibres de verre à raison de 20%, auto-extinguible VO) pour les séries standard, à charges lourdes et doubles
- aluminium pour les séries standard et à charges lourdes
- caoutchouc - de couleur noire - pour les séries standard et à charges lourdes.

Les autres composants des brides sont fabriqués, en série, dans les matériaux suivants:

- plaque inférieure et supérieure: en acier FE 36
- vis et rondelles: en acier A6S
- rails ou conduites: en acier FE 36

Toutes les pièces métalliques sont fabriquées en acier inox 316L. Sur demande en acier inox 304 - inox 316.

Suggerimenti per il montaggio

Montaggio con piastra a saldare

Posizionare la piastra inferiore nella posizione pre-scelta e bloccarla con un magnete o con un'appropriata attrezzatura. Saldare quindi la piastra. Inserire il semiguscio inferiore della staffa, posizionare il tubo, mettere il secondo semiguscio e serrare le viti. Non saldare la piastra inferiore con la staffa di plastica montata, le piastre inferiori allungate possono essere avvitate direttamente sul telaio della macchina. Attenzione agli interassi dei tubi (si sconsiglia il contatto fra due staffe).

Montaggio con binario

I binari sono forniti con lunghezza di 2 metri. Saldare o avvitare il binario sul telaio della macchina, inserire il dado scorrevole nel binario e girarlo leggermente in modo che non possa ruotare, inserire la parte inferiore della staffa, posizionare il tubo, mettere il secondo semiguscio e serrare le viti. Attenzione agli interassi dei tubi (si sconsiglia il contatto fra due staffe).

Montaggio raggruppato

Consiste nel montare due staffe una sopra l'altra usando due viti speciali. Con questo montaggio si possono raggruppare due o più staffe bloccando le viti speciali con un'appropriata piastrina di sicurezza.

Mounting details

Weld plate mounting

Weld lower plate in position. Press on lower clamp half, lay tube, put on top clamp half, insert screws and tighten. Don't weld with plastic clamps on them. Prolonged lower plate can be screwed directly to the surface. Ensure the clamp halves are not in contact with each other.

Rail mounting

Mounting rails are supplied in 2m lengths. Weld or screw mounting rail in position. Insert nut into rail and turn to fix at correct spacing. Press on lower clamp half, lay tube, put on top clamp half, insert screw and tighten. Ensure the clamp halves are not in contact with each other.

Stacking

Consists of 2 clamp halves, stacking bolt(s) and a bolt locking plate. To construct a stack, fasten a weld plate or rail nut and locate 2 clamp halves and tube, securing with stacking bolt(s). Once tight, these bolts must be held with a locking plate. The next clamp can then be assembled and so on, until the stack is complete, the last clamp being secured with conventional bolt(s) and top plate. For each stack a mounting shape of your choice should be ordered, components from wich start and finish the stack. We reserve the right to make modifications in the interest of technical progress.

Distanza suggerita tra una staffa e l'altra dello stesso gruppo.
 Recommend distance for installation of clamps of same group code.
 Empfohlener Schellenabstand.
 Distance conseillée entre les colliers.

Ø est. tubo - Ø tube Rohr-AD / Tube-OD in mm	Distanza fra le staffe in m Distances of clamps in meters Schellenabstand in m Distance entre les colliers en mètres
a 6 bis 12,7	0,9
a 15 bis 22	1,2
a 23 bis 28	1,5
a 30 bis 38,1	2
a 40 bis 48,3	2,5
a 50 bis 57	3
a 60 bis 70	3,4
a 76,1 bis 88,9	3,7
a 101,6 bis 108	4
a 114,3 bis 133	4,3
a 139,7 bis 165,1	5
a 168,3 bis 324	5,5

Posizionare le staffe prima e dopo una curva a 90° (a gomito)
 When an elbow or bend be supported the clamps, should be positioned as close as possible on each side of the bend.

Rohrbögen direkt vor und hinter dem Bogen mit RSB-Schellen abfangen.
 Monter les colliers avant et après une courbe à 90°.

Montagehinweise

Montage auf Anschweißplatten

Anschweißplatten auf einer mit der Belastung abgestimmten Unterlage anschweißen. Untere Schellenhälfte auf Anschweißplatte klemmen, Rohr einlegen, zweite Schellenhälfte aufsetzen und mit den Schrauben festziehen. Nicht mit aufgesetzter Kunststoff-Schelle schweißen! Verlängerte Anschweißplatten können mit der Unterlage verschraubt werden.

Auf Vorspannung achten (Schellenhälften dürfen sich nach der Montage nicht berühren)!

Montage auf Tragschienen

Tragschienen werden wahlweise in Stücken zu 2 m geliefert. Tragschiene anschweißen oder mit Befestigungswinkel anschrauben. Tragschienenmutter in Schiene einführen und bis zum Anschlag drehen (auf richtigen Abstand achten). Untere Schellenhälfte aufkleben, Rohr einlegen, zweite Schellenhälfte aufsetzen und mit den Schrauben festziehen. Auf Vorspannung achten (Schellenhälften dürfen sich nach Montage nicht berühren)!

Aufbaumontage

Anschweißplatte oder Tragschiene anschweißen oder mit Befestigungswinkel anschrauben. Untere Schellenhälfte aufkleben, Rohr einlegen, obere Schellenhälfte aufsetzen und mit Aufbauschrauben festziehen (Aufbauschraube steht über). Durch Auflegen eines Sicherungsbleches auf die obere Schellenhälfte wird ein Verdrehen der Aufbauschraube verhindert. Zweite Rohrschelle nun in gleicher Weise aufmontieren usw. Form und Maßänderungen, die der technischen Entwicklung dienen, vorbehalten.

Conseils pour le montage

Montage avec plaque à souder

Poser la plaque inférieure et fixer avec un aimant, ou bien avec un autre outillage. Souder la plaque; poser le collier inférieur, le tube, le deuxième demi-collier et serrer les vis. Ne pas souder la plaque inférieure après le montage du collier en plastique.

Les plaques inférieures allongées sont capables pour le montage direct sur le châssis de la machine. Il faut bien contrôler la distance entre les tubes (le contact entre les colliers est déconseillé).

Montage avec rail support

Les rails supports sont livrés en longueur 2 mètres. Souder ou bien visser le rail sur le châssis de la machine, insérer le contre écrou hexagonal dans le rail et le tourner, poser le collier inférieur, poser le tube, poser le deuxième demi-collier et serrer les vis. Il faut bien contrôler la distance entre les tubes (le contact entre les colliers est déconseillé).

Montage groupé

C'est le montage de deux colliers, un au-dessus de l'autre par deux vis spéciales. Par ce montage c'est possible de grouper, deux ou bien plusieurs colliers en bloquant les vis spéciales par une propre plaque de sécurité.

Max. momento torcente per il fissaggio delle viti. Staffe con piastra superiore.

Max. bolt tightening Torque in Nm, for clamps with upper plate.

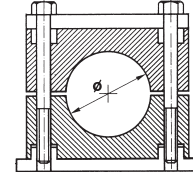
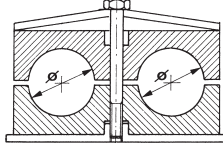
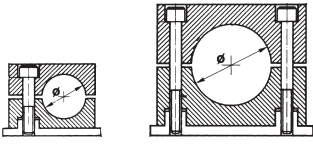
Max. Schraubenanzugsmoment in Nm, montage mit Deckplatte.

Max. effort en Nm, montage avec plaque supérieure.

Serie – Series Baureihe – Série			n° tu/Werkstoff/Material/Matériel		
			Polypropylen	Polyamide	Aluminium
Standard		M 6	8	10	12
Doppia – Twin Doppel – Double	Gr. 1	M 6	5	6	-
	Gr. 2 ÷ 4	M 8	12	12	-
	Gr. 5		8	8	-
Pesante Heavy Schwere Lourde	Gr. 1	M 10	12	20	30
	Gr. 2		12	20	30
	Gr. 3		15	25	35
	Gr. 4	M 12	30	40	55
	Gr. 5	M 16	45	55	120
	Gr. 6	M 20	80	150	220
	Gr. 7	M 24	110	200	250
	Gr. 8	M 30	180	350	500
Gr. 9	M 30	200	370	500	

Programma di produzione Production program

gruppo **0** gruppo **1 ÷ 6**
group



collari serie standard standard clamps			
gruppo - group	diametro tubo pipe diameter		
	Ø mm	foro nominale nominal bore	Ø pollici inch. O.D.
0	6		
	8		5/16"
	10	G 1/8"	
	12		
1	6		
	6,4		1/4"
	8		5/16"
	9,5		3/8"
	10	G 1/8"	
2	12,7		1/2"
	13,5	G 1/4"	
	14		
	15		
	16		5/8"
	17,2	G 3/8"	
	18		
	19		3/4"
3	19		3/4"
	20		
	21,3	G 1/2"	
	22		7/8"
	25		
4	25,4		1"
	26,9	G 3/4"	
	28		
	30		
5	32		1 1/4"
	33,7	G 1"	
	35		
	38		1 1/2"
	40		
	42,4	G 1 1/4"	
6	44,5		1 3/4"
	48,3	G 1 1/2"	
	50,8		2"

collari doppi double clamps			
gruppo - group	diametro tubo pipe diameter		
	Ø mm	foro nominale nominal bore	Ø pollici inch. O.D.
1	6		
	6,4		1/4"
	8		5/16"
	9,5		3/8"
	10	G 1/8"	
2	12,7		1/2"
	13,5	G 1/4"	
	14		
	15		
	16		5/8"
	17,2	G 3/8"	
	18		
3	19		3/4"
	20		
	21,3	G 1/2"	
	22		7/8"
	25		
	25,4		1"
4	26,9	G 3/4"	
	28		
5	30		
	32		1 1/4"
	33,7	G 1"	
	35		
	38		1 1/2"
	42,4	G 1 1/4"	

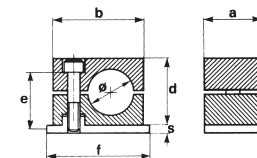
collari serie pesante heavy duty clamps								
gruppo - group	diametro tubo pipe diameter			gruppo - group	diametro tubo pipe diameter			
	Ø mm	foro nominale nominal bore	Ø pollici inch. O.D.		Ø mm	foro nominale nominal bore	Ø pollici inch. O.D.	
1	6			5	65			
	6,4		1/4"		70		2 3/4"	
	8		5/16"		75			
	9,5		3/8"		76,1	G 2 1/2"	3"	
	10	G 1/8"			80			
	12			82,5		3 1/4"		
	12,7		1/2"	88,9	G 3"	3 1/2"		
	13,5	G 1/4"		88,9	G 3"	3 1/2"		
	14			100				
	15			101,6	G 3 1/2"	4"		
2	16		5/8"	6	108		4 1/4"	
	16		5/8"		114,3	G 4"	4 1/2"	
	17,2	G 3/8"			127	G 4 1/2"	5"	
	18				133		5 1/2"	
	19		3/4"		133		5 1/4"	
	20			139,7	G 5"	5 1/2"		
	21,3	G 1/2"		152,4	G 5 1/2"	6"		
	22		7/8"	165		6 1/2"		
	25			168,3	G 6"			
	25,4		1"	168,3	G 6"			
3	26,9	G 3/4"		7	177,8		7"	
	28				193,7		7 5/8"	
	30				216		8 1/2"	
	32		1 1/4"		219,1	G 8"		
	33,7	G 1"						
	4	35			8			
		38		1 1/2"				
		40						
		42						
		42,4	G 1 1/4"					
38			1 1/2"					
42								
42,4		G 1 1/4"						
44,5			1 3/4"					
48,3		G 1 1/2"						
50								
50,8		2"						
55								
57		2 1/4"						
60,3	G 2"							
63,5		2 1/2"						
65								
70		2 3/4"						

**Collari serie standard
in polipropilene,
poliammide autoestinguente,
gomma o alluminio**

**Standard clamps
in polypropylene,
self-extinguishing polyamide,
rubber or aluminium**

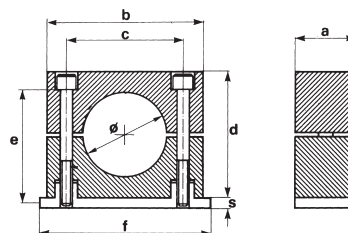
gruppo
group

0



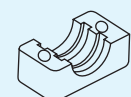
gruppo
group

1 ÷ 6

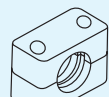


gruppo - group	diametro tubo pipe diameter			tipo di collare clamp type				dimensioni in mm dimension in mm							pezzi per confezione box quantity
	Ø mm	pollici / inches G	Ø O.D.	A polipropilene polypropylene	MA polyamide self-extinguishing	RA gomma rubber	LA alluminio aluminium	a	b	c	d	f	s	e	
0	6			A ₀ 06	MA ₀ 06	–	–	30	28	–	27	31,5	3	M6x20	50
	8		5/16"	A ₀ 08	MA ₀ 08	–	–								
	10	1/8"		A ₀ 10	MA ₀ 10	–	–								
	12			A ₀ 12	MA ₀ 12	–	–								
1	6			A ₁ 06	MA ₁ 06	RA ₁ 06	LA ₁ 06	30	34	20	27	41	3	M6x20	50
	6,4		1/4"	A ₁ 6,4	MA ₁ 6,4	RA ₁ 6,4	LA ₁ 6,4								
	8		5/16"	A ₁ 08	MA ₁ 08	RA ₁ 08	LA ₁ 08								
	9,5		3/8"	A ₁ 9,5	MA ₁ 9,5	RA ₁ 9,5	LA ₁ 9,5								
	10	1/8"		A ₁ 10	MA ₁ 10	RA ₁ 10	LA ₁ 10								
2	12,7		1/2"	A ₂ 12,7	MA ₂ 12,7	RA ₂ 12,7	LA ₂ 12,7	30	40	26	33	46	3	M6x25	50
	13,5	1/4"		A ₂ 1/4"	MA ₂ 1/4"	RA ₂ 1/4"	LA ₂ 1/4"								
	14			A ₂ 14	MA ₂ 14	RA ₂ 14	LA ₂ 14								
	15			A ₂ 15	MA ₂ 15	RA ₂ 15	LA ₂ 15								
	16		5/8"	A ₂ 16	MA ₂ 16	RA ₂ 16	LA ₂ 16								
	17,2	3/8"		A ₂ 3/8"	MA ₂ 3/8"	RA ₂ 3/8"	LA ₂ 3/8"								
	18			A ₂ 18	MA ₂ 18	RA ₂ 18	LA ₂ 18								
3	19		3/4"	A ₃ 19	MA ₃ 19	RA ₃ 19	LA ₃ 19	30	48	33	35	54	3	M6x30	50
	20			A ₃ 20	MA ₃ 20	RA ₃ 20	LA ₃ 20								
	21,3	1/2"		A ₃ 1/2"	MA ₃ 1/2"	RA ₃ 1/2"	LA ₃ 1/2"								
	22		7/8"	A ₃ 22	MA ₃ 22	RA ₃ 22	LA ₃ 22								
	25			A ₃ 25	MA ₃ 25	RA ₃ 25	LA ₃ 25								
4	25,4	1"		A ₃ 25,4	MA ₃ 25,4	RA ₃ 25,4	LA ₃ 25,4	30	57	40	42	61	3	M6x35	25
	26,9	3/4"		A ₄ 3/4"	MA ₄ 3/4"	RA ₄ 3/4"	LA ₄ 3/4"								
	28			A ₄ 28	MA ₄ 28	RA ₄ 28	LA ₄ 28								
	30			A ₄ 30	MA ₄ 30	RA ₄ 30	LA ₄ 30								
5	32		1 1/4"	A ₄ 32	MA ₄ 32	RA ₄ 32	LA ₄ 32	30	68	52	58	73	3	M6x50	25
	32		1 1/4"	A ₅ 32	MA ₅ 32	RA ₅ 32	LA ₅ 32								
	33,7	1"		A ₅ 1"	MA ₅ 1"	RA ₅ 1"	LA ₅ 1"								
	35			A ₅ 35	MA ₅ 35	RA ₅ 35	LA ₅ 35								
	38		1 1/2"	A ₅ 38	MA ₅ 38	RA ₅ 38	LA ₅ 38								
	40			A ₅ 40	MA ₅ 40	RA ₅ 40	LA ₅ 40								
	42			A ₅ 42	MA ₅ 42	RA ₅ 42	LA ₅ 42								
6	42,4	1 1/4"		A ₅ 1 1/4"	MA ₅ 1 1/4"	RA ₅ 1 1/4"	LA ₅ 1 1/4"	30	86	66	66	89	3	M6x60	25
	44,5		1 3/4"	A ₆ 44,5	MA ₆ 44,5	RA ₆ 44,5	LA ₆ 44,5								
	48,3	1 1/2"		A ₆ 1 1/2"	MA ₆ 1 1/2"	RA ₆ 1 1/2"	LA ₆ 1 1/2"								
	50,8		2"	A ₆ 50,8	MA ₆ 50,8	RA ₆ 50,8	LA ₆ 50,8								

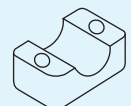
A... = polipropilene / polypropylene* MA... = polyamide / self-extinguishing RA... = gomma / rubber LA... = alluminio / aluminium
 ...H = interno liscio / smooth inside (per ordine di collari tipo H, aggiungere H dopo il codice / to order clamps type H, please put the H at the end of the code)



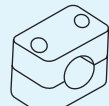
tipo normale
interno sagomato
normal model
profiled inside



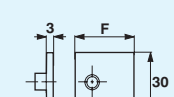
tipo normale
interno sagomato
normal model
profiled inside



tipo H
interno liscio
H model
smooth inside

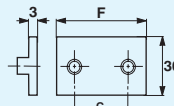


tipo H
interno liscio
H model
smooth inside



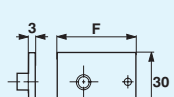
gruppo
group

0



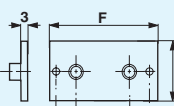
gruppo
group

1 ÷ 6



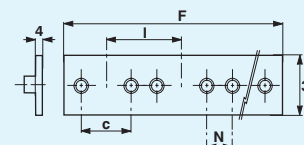
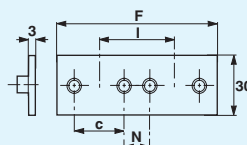
gruppo
group

0



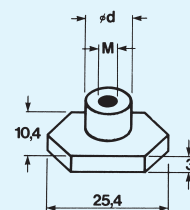
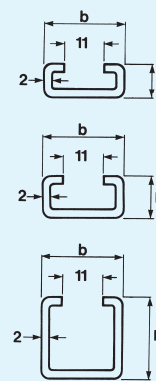
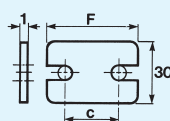
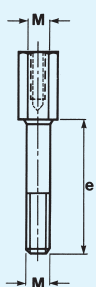
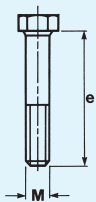
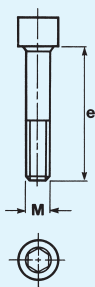
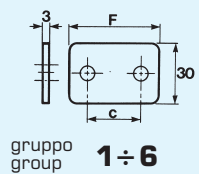
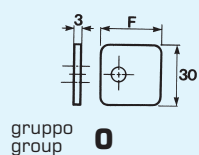
gruppo
group

1 ÷ 6



semi-collare clamp-half	coppia collari clamp body (2 halves)	piastra inferiore lower plate		piastra inferiore allungata prolonged lower plate			piastra inferiore doppia double lower plate					piastra inferiore multipla multiple lower plate				
		APIN		APIA			APID					APIM				
A....S	A....C	F mm	c mm	F mm	c mm	d mm	F mm	c mm	N mm	l mm	n° collari clamps	F mm	c mm	N mm	l mm	n° collari clamps
A ₀ 06 S	A ₀ 06 C	APIN₀		APIA₀			APID₀					APIM₀				
A ₀ 08 S	A ₀ 08 C															
A ₀ 10 S	A ₀ 10 C	31,5	-	46	-	-	63	-	-	30	2	315	-	-	30	10
A ₀ 12 S	A ₀ 12 C															
A ₁ 06 S	A ₁ 06 C	APIN₁		APIA₁			APID₁					APIM₁				
A ₁ 6,4 S	A ₁ 6,4 C															
A ₁ 08 S	A ₁ 08 C															
A ₁ 9,5 S	A ₁ 9,5 C	41	20	64	20	51	82	20	20	40	2	410	20	20	40	10
A ₁ 10 S	A ₁ 10 C															
A ₁ 12 S	A ₁ 12 C															
A ₂ 12,7 S	A ₂ 12,7	APIN₂		APIA₂			APID₂					APIM₂				
A ₂ 1/4" S	A ₂ 1/4" C															
A ₂ 14 S	A ₂ 14 C															
A ₂ 15 S	A ₂ 15 C															
A ₂ 16 S	A ₂ 16 C	46	26	70	26	56	92	26	18	44	2	460	26	18	44	10
A ₂ 3/8" S	A ₂ 3/8" C															
A ₂ 18 S	A ₂ 18 C															
A ₂ 19 S	A ₂ 19 C															
A ₃ 19 S	A ₃ 19 C	APIN₃		APIA₃			APID₃					APIM₃				
A ₃ 20 S	A ₃ 20 C															
A ₃ 1/2" S	A ₃ 1/2" C															
A ₃ 22 S	A ₃ 22 C	54	33	78	33	64	108	33	19	52	2	540	33	19	52	10
A ₃ 25 S	A ₃ 25 C															
A ₃ 25,4 S	A ₃ 25,4 C															
A ₄ 3/4" S	A ₄ 3/4" C	APIN₄		APIA₄			APID₄					APIM₄				
A ₄ 28 S	A ₄ 28 C															
A ₄ 30 S	A ₄ 30 C	61	40	86	40	71	122	40	20	60	2	305	40	20	60	5
A ₄ 32 S	A ₄ 32 C															
A ₅ 32 S	A ₅ 32 C	APIN₅		APIA₅			APID₅					APIM₅				
A ₅ 1" S	A ₅ 1" C															
A ₅ 35 S	A ₅ 35 C															
A ₅ 38 S	A ₅ 38 C															
A ₅ 40 S	A ₅ 40 C	73	52	97	52	83	146	52	23	75	2	365	52	23	75	5
A ₅ 42 S	A ₅ 42 C															
A ₅ 1 1/4" S	A ₅ 1 1/4" C															
A ₅ 45 S	A ₅ 45 C															
A ₆ 44,5 S	A ₆ 44,5 C	APIN₆		APIA₆			APID₆					APIM₆				
A ₆ 1 1/2" S	A ₆ 1 1/2" C															
A ₆ 50,8 S	A ₆ 50,8 C	89	66	112	66	100	178	66	24	90	2	445	66	24	90	5

* La produzione standard è di colore verde, colore nero su richiesta.
 Standard production in green, black color on request.



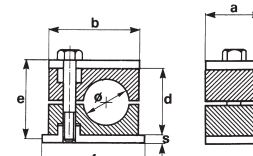
piastra superiore upper plate	vite a testa tonda esagono interno T.C.E.I. screws	vite a testa esagonale hexagonal head screw	vite a testa esag. allungata high hexeg. head screw	piastra superiore di sicurezza security upper plate	binari portanti spessore 2 mm rail	dado esagonale fissaggio binari hexagonal nut	
APS	AVTC	AVTE	AVTEA	APMRS	ABINS	ADES	
F mm	c mm	M	e mm	M	e mm	M	ø d mm
APS₀	AVTC₀	AVTE₀	AVTEA₀	APMRS₀	ABINS-1	ADES	
28	—	M6 20	M6 30	M6 20			28
APS₁	AVTC₁	AVTE₁	AVTEA₁	APMRS₁	28		11
37	20	M6 20	M6 30	M6 20	34		20
APS₂	AVTC₂	AVTE₂	AVTEA₂	APMRS₂	ABINS-2		
43	26	M6 25	M6 35	M6 25			41
APS₃	AVTC₃	AVTE₃	AVTEA₃	APMRS₃	ABINS-3		
50	33	M6 30	M6 40	M6 30		47	33
APS₄	AVTC₄	AVTE₄	AVTEA₄	APMRS₄	28	14	
57	40	M6 35	M6 45	M6 35	57	40	
APS₅	AVTC₅	AVTE₅	AVTEA₅	APMRS₅	ABINS-3		
69	52	M6 50	M6 60	M6 50		67	52
APS₆	AVTC₆	AVTE₆	AVTEA₆	APMRS₆	28	30	
83	66	M6 60	M6 70	M6 60	82	66	

* Altre piastre speciali sono a pag. 20
Other special plate are at page 20

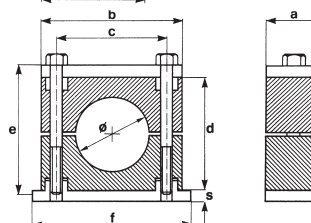
Collari serie standard con piastra superiore in polipropilene, poliammide autoestinguente, gomma o alluminio

Standard clamps with upper plate in polypropylene, self-extinguishing polyamide, rubber or aluminium

gruppo group **0**



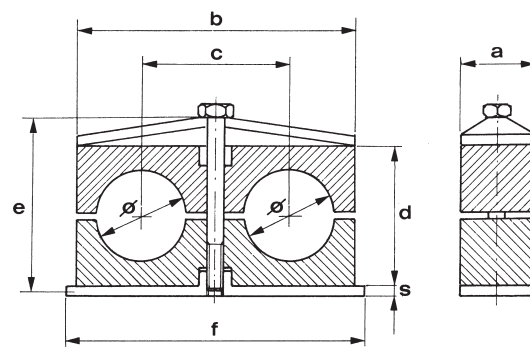
gruppo group **1÷6**



gruppo - group	diametro tubo pipe diameter			tipo di collare clamp type				dimensioni in mm dimension in mm						pezzi per confezione box quantity	
	Ø mm	pollici / inches G	Ø O.D.	A polipropilene polypropylene	MA poliammide self-extinguishing	RA gomma rubber	LA alluminio aluminium	a	b	c	d	f	s		e
0	6			A ₀ 06 +APS	MA ₀ 06 +APS	—	—	30	28	—	27	32	3	M6x30	50
	8		5/16"	A ₀ 08 +APS	MA ₀ 08 +APS	—	—								
	10		1/8"	A ₀ 10 +APS	MA ₀ 10 +APS	—	—								
	12			A ₀ 12 +APS	MA ₀ 12 +APS	—	—								
1	6			A ₁ 06 +APS	MA ₁ 06 +APS	RA ₁ 06 +APS	LA ₁ 06 +APS	30	34	20	27	42	3	M6x30	50
	6,4		1/4"	A ₁ 6,4 +APS	MA ₁ 6,4 +APS	RA ₁ 6,4 +APS	LA ₁ 6,4 +APS								
	8		5/16"	A ₁ 08 +APS	MA ₁ 08 +APS	RA ₁ 08 +APS	LA ₁ 08 +APS								
	9,5		3/8"	A ₁ 9,5 +APS	MA ₁ 9,5 +APS	RA ₁ 9,5 +APS	LA ₁ 9,5 +APS								
	10		1/8"	A ₁ 10 +APS	MA ₁ 10 +APS	RA ₁ 10 +APS	LA ₁ 10 +APS								
	12			A ₁ 12 +APS	MA ₁ 12 +APS	RA ₁ 12 +APS	LA ₁ 12 +APS								
2	12,7		1/2"	A ₂ 12,7+APS	MA ₂ 12,7+APS	RA ₂ 12,7+APS	LA ₂ 12,7+APS	30	40	26	33	48	3	M6x35	50
	13,5		1/4"	A ₂ 13,5+APS	MA ₂ 13,5+APS	RA ₂ 13,5+APS	LA ₂ 13,5+APS								
	14			A ₂ 14+APS	MA ₂ 14+APS	RA ₂ 14+APS	LA ₂ 14+APS								
	15			A ₂ 15+APS	MA ₂ 15+APS	RA ₂ 15+APS	LA ₂ 15+APS								
	16		5/8"	A ₂ 16+APS	MA ₂ 16+APS	RA ₂ 16+APS	LA ₂ 16+APS								
	17,2		3/8"	A ₂ 17,2+APS	MA ₂ 17,2+APS	RA ₂ 17,2+APS	LA ₂ 17,2+APS								
	18			A ₂ 18+APS	MA ₂ 18+APS	RA ₂ 18+APS	LA ₂ 18+APS								
	19		3/4"	A ₂ 19+APS	MA ₂ 19+APS	RA ₂ 19+APS	LA ₂ 19+APS								
3	19		3/4"	A ₃ 19+APS	MA ₃ 19+APS	RA ₃ 19+APS	LA ₃ 19+APS	30	48	33	35	55	3	M6x40	50
	20			A ₃ 20+APS	MA ₃ 20+APS	RA ₃ 20+APS	LA ₃ 20+APS								
	21,3		1/2"	A ₃ 21,3+APS	MA ₃ 21,3+APS	RA ₃ 21,3+APS	LA ₃ 21,3+APS								
	22		7/8"	A ₃ 22+APS	MA ₃ 22+APS	RA ₃ 22+APS	LA ₃ 22+APS								
	25			A ₃ 25+APS	MA ₃ 25+APS	RA ₃ 25+APS	LA ₃ 25+APS								
	25,4		1"	A ₃ 25,4+APS	MA ₃ 25,4+APS	RA ₃ 25,4+APS	LA ₃ 25,4+APS								
4	26,9		3/4"	A ₄ 26,9+APS	MA ₄ 26,9+APS	RA ₄ 26,9+APS	LA ₄ 26,9+APS	30	57	40	42	62	3	M6x45	25
	28			A ₄ 28+APS	MA ₄ 28+APS	RA ₄ 28+APS	LA ₄ 28+APS								
	30			A ₄ 30+APS	MA ₄ 30+APS	RA ₄ 30+APS	LA ₄ 30+APS								
	32		1 1/4"	A ₄ 32+APS	MA ₄ 32+APS	RA ₄ 32+APS	LA ₄ 32+APS								
5	32		1 1/4"	A ₅ 32+APS	MA ₅ 32+APS	RA ₅ 32+APS	LA ₅ 32+APS	30	68	52	58	74	3	M6x60	25
	33,7		1"	A ₅ 33,7+APS	MA ₅ 33,7+APS	RA ₅ 33,7+APS	LA ₅ 33,7+APS								
	35			A ₅ 35+APS	MA ₅ 35+APS	RA ₅ 35+APS	LA ₅ 35+APS								
	38		1 1/2"	A ₅ 38+APS	MA ₅ 38+APS	RA ₅ 38+APS	LA ₅ 38+APS								
	40			A ₅ 40+APS	MA ₅ 40+APS	RA ₅ 40+APS	LA ₅ 40+APS								
	42			A ₅ 42+APS	MA ₅ 42+APS	RA ₅ 42+APS	LA ₅ 42+APS								
	42,4		1 1/4"	A ₅ 42,4+APS	MA ₅ 42,4+APS	RA ₅ 42,4+APS	LA ₅ 42,4+APS								
45			A ₅ 45+APS	MA ₅ 45+APS	RA ₅ 45+APS	LA ₅ 45+APS									
6	44,5		1 3/4"	A ₆ 44,5+APS	MA ₆ 44,5+APS	RA ₆ 44,5+APS	LA ₆ 44,5+APS	30	86	66	66	88	3	M6x70	25
	48,3		1 1/2"	A ₆ 48,3+APS	MA ₆ 48,3+APS	RA ₆ 48,3+APS	LA ₆ 48,3+APS								
	50,8		2"	A ₆ 50,8+APS	MA ₆ 50,8+APS	RA ₆ 50,8+APS	LA ₆ 50,8+APS								

Collari doppi in polipropilene, poliammide autoestinguente o gomma

Double clamps in polypropylene, self-extinguishing polyamide or rubber



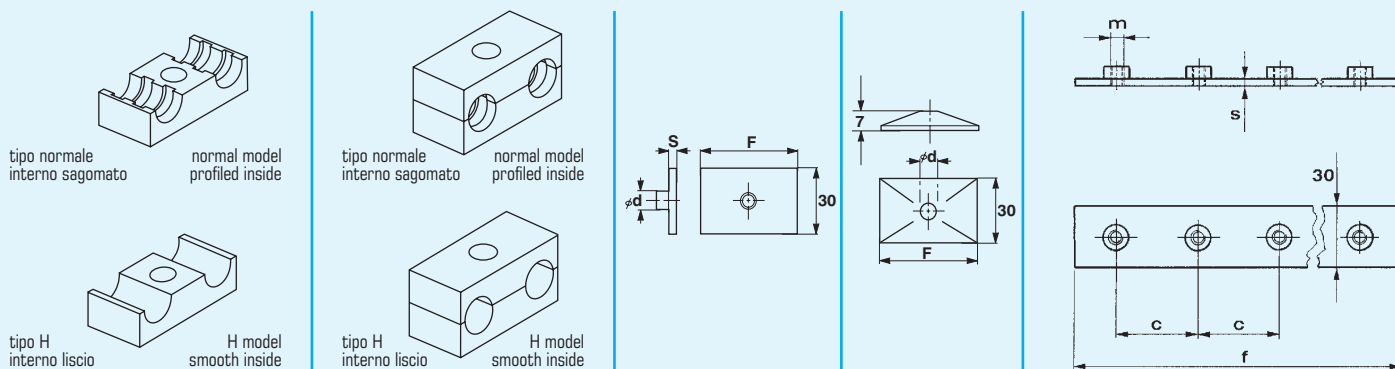
gruppo - group	diametro tubo pipe diameter		tipo di collare clamp type			dimensioni in mm dimension in mm							pezzi per confezione box quantity	
	ϕ mm	pollici / inches G	ϕ O.D.	AD polipropilene polypropylene	MD poliammide self-extinguishing	RD gomma rubber	a	b	c	d	f	s		e
1	6-6			AD ₁ 06-06	MD ₁ 06-06	RD ₁ 06-06	30	37	20	25	37	3	MBx35	50
	6,4-6,4		1/4 - 1/4"	AD ₁ 6,4-6,4	MD ₁ 6,4-6,4	RD ₁ 6,4-6,4								
	8-8		5/16 - 5/16"	AD ₁ 08-08	MD ₁ 08-08	RD ₁ 08-08								
	9,5-9,5		3/8 - 3/8"	AD ₁ 9,5-9,5	MD ₁ 9,5-9,5	RD ₁ 9,5-9,5								
	10-10		1/8 - 1/8"	AD ₁ 10-10	MD ₁ 10-10	RD ₁ 10-10								
	12-12			AD ₁ 12-12	MD ₁ 12-12	RD ₁ 12-12								
2	12,7		1/2 - 1/2"	AD ₂ 12,7-12,7	MD ₂ 12,7-12,7	RD ₂ 12,7-12,7	30	53	29	26	55	5	MBx35	50
	13,5		1/4 - 1/4"	AD ₂ 1/4 - 1/4"	MD ₂ 1/4 - 1/4"	RD ₂ 1/4 - 1/4"								
	14-14			AD ₂ 14-14	MD ₂ 14-14	RD ₂ 14-14								
	15-15			AD ₂ 15-15	MD ₂ 15-15	RD ₂ 15-15								
	16-16		5/8 - 5/8"	AD ₂ 16-16	MD ₂ 16-16	RD ₂ 16-16								
	17,2-17,2		3/8 - 3/8"	AD ₂ 3/8 - 3/8"	MD ₂ 3/8 - 3/8"	RD ₂ 3/8 - 3/8"								
18-18			AD ₂ 18-18	MD ₂ 18-18	RD ₂ 18-18									
3	19-19		3/4 - 3/4"	AD ₃ 19-19	MD ₃ 19-19	RD ₃ 19-19	30	67	36	37	70	5	MBx45	50
	20-20			AD ₃ 20-20	MD ₃ 20-20	RD ₃ 20-20								
	21,3-21,3		1/2 - 1/2"	AD ₃ 1/2 - 1/2"	MD ₃ 1/2 - 1/2"	RD ₃ 1/2 - 1/2"								
	22-22		7/8 - 7/8"	AD ₃ 22-22	MD ₃ 22-22	RD ₃ 22-22								
	25-25			AD ₃ 25-25	MD ₃ 25-25	RD ₃ 25-25								
25,4-25,4		1 - 1"	AD ₃ 25,4-25,4	MD ₃ 25,4-25,4	RD ₃ 25,4-25,4									
4	26,9		3/4 - 3/4"	AD ₄ 3/4 - 3/4"	MD ₄ 3/4 - 3/4"	RD ₄ 3/4 - 3/4"	30	82	45	42	85	5	MBx50	50
	28-28			AD ₄ 28-28	MD ₄ 28-28	RD ₄ 28-28								
	30-30			AD ₄ 30-30	MD ₄ 30-30	RD ₄ 30-30								
5	32-32		1 1/4 - 1 1/4"	AD ₅ 32-32	MD ₅ 32-32	RD ₅ 32-32	30	106	56	54	110	5	MBx60	25
	33,7-33,7		1 - 1"	AD ₅ 1 - 1"	MD ₅ 1 - 1"	RD ₅ 1 - 1"								
	35-35			AD ₅ 35-35	MD ₅ 35-35	RD ₅ 35-35								
	38-38		1 1/2 - 1 1/2"	AD ₅ 38-38	MD ₅ 38-38	RD ₅ 38-38								
	40-40			AD ₅ 40-40	MD ₅ 40-40	RD ₅ 40-40								
	42-42			AD ₅ 42-42	MD ₅ 42-42	RD ₅ 42-42								
42,4-42,4		1 1/4 - 1 1/4"	AD ₅ 1 1/4 - 1 1/4"	MD ₅ 1 1/4 - 1 1/4"	RD ₅ 1 1/4 - 1 1/4"									

AD*... = polipropilene / polypropylene

MD... = polyamide / self-extinguishing

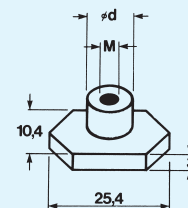
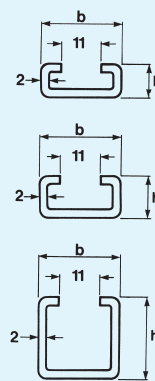
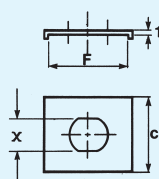
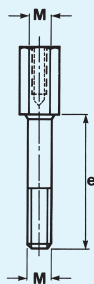
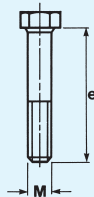
RD... = gomma / rubber

...H = interno liscio / smooth inside (per ordine di collari tipo H, aggiungere H dopo il codice / to order clamps type H, please put the H at the end of the code)



semi-collare clamp-half	coppia collari clamp body (2 halves)	piastra inferiore lower plate			piastra superiore upper plate		piastra inferiore multipla multiple lower plate				
		ADPIN			ADPS		ADPIM				
AD ... S	AD ... C	F mm	Ø d mm	S	F mm	Ø d mm	f mm	c mm	s mm	m	n° collari clamps
AD ₁ 06-06 S	AD ₁ 06-06 C	ADPIN ₁			ADPS ₁		ADPIM ₁				
AD ₁ 6,4-6,4 S	AD ₁ 6,4-6,4 C	30	12	3	35	7	200	40	3	M6	5
AD ₁ 08-08 S	AD ₁ 08-08 C										
AD ₁ 9,5-9,5 S	AD ₁ 9,5-9,5 C										
AD ₁ 10-10 S	AD ₁ 10-10 C										
AD ₁ 12-12 S	AD ₁ 12-12 C										
AD ₂ 12,7-12,7 S	AD ₂ 12,7-12,7 C										
AD ₂ 1/4 - 1/4" S	AD ₂ 1/4 - 1/4" C	55	14	5	52	9	290	58	5	M8	5
AD ₂ 14-14 S	AD ₂ 14-14 C										
AD ₂ 15-15 S	AD ₂ 15-15 C										
AD ₂ 16-16 S	AD ₂ 16-16 C										
AD ₂ 3/8 - 3/8" S	AD ₂ 3/8 - 3/8" C										
AD ₂ 18-18 S	AD ₂ 18-18 C										
AD ₃ 19-19 S	AD ₃ 19-19 C	ADPIN ₃			ADPS ₃		ADPIM ₃				
AD ₃ 20-20 S	AD ₃ 20-20 C	70	14	5	66	9	360	72	5	M8	5
AD ₃ 1/2 - 1/2" S	AD ₃ 1/2 - 1/2" C										
AD ₃ 22-22 S	AD ₃ 22-22 C										
AD ₃ 25-25 S	AD ₃ 25-25 C										
AD ₃ 25,4-25,4 S	AD ₃ 25,4-25,4 C										
AD ₄ 3/4 - 3/4" S	AD ₄ 3/4 - 3/4" C										
AD ₄ 28-28 S	AD ₄ 28-28 C	85	14	5	81	9	450	90	5	M8	5
AD ₄ 30-30 S	AD ₄ 30-30 C										
AD ₅ 32-32 S	AD ₅ 32-32 C										
AD ₅ 1 - 1" S	AD ₅ 1 - 1" C	110	14	5	105	9	560	112	5	M8	5
AD ₅ 35-35 S	AD ₅ 35-35 C										
AD ₅ 38-38 S	AD ₅ 38-38 C										
AD ₅ 40-40 S	AD ₅ 40-40 C										
AD ₅ 42-42 S	AD ₅ 42-42 C										
AD ₅ 1 1/4 - 1 1/4" S	AD ₅ 1 1/4 - 1 1/4" C										

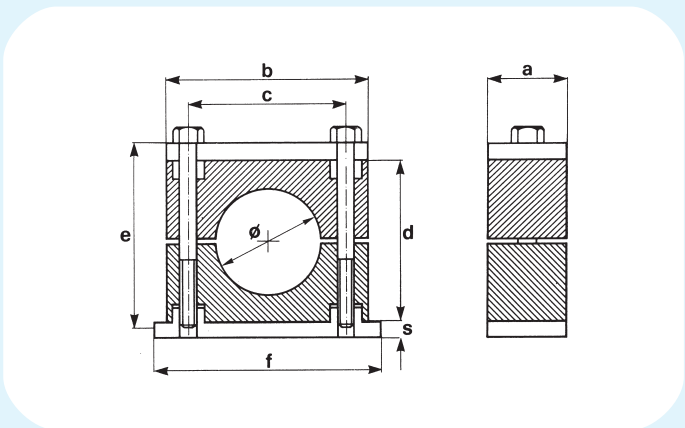
* La produzione standard è di colore verde, colore nero su richiesta.
Standard production in green, black color on request.



vite a testa esagonale high hexagonal head screw		vite a testa esagonale allungata high hexagonal head screw		piastra superiore di sicurezza security upper plate			binari portanti spessore 2 mm rail		dado esagonale fissaggio binari hexagonal nut	
ADVTE		ADVTEA		APMRSD			ABINS		ADES	
M	e mm	M	e mm	F mm	c mm	X mm	b mm	h mm	M	Ø d mm
ADVTE₁		ADVTEA₁		APMRSD₁			ABINS-1		ADES	
M6	35	M6	20	30	30	11			M6	12
ADVTE₂		ADVTEA₂		APMRSD₂₋₅			ABINS-2		ADES₂	
M8	35	M8	20	30	30	13				
ADVTE₃		ADVTEA₃		APMRSD₂₋₅			ABINS-3		ADES₃	
M8	45	M8	29	30	30	13				
ADVTE₄		ADVTEA₄		APMRSD₂₋₅			ABINS-3		ADES₃	
M8	50	M8	34	30	30	13				
ADVTE₅		ADVTEA₅		APMRSD₂₋₅			ABINS-3		ADES₃	
M8	60	M8	47	30	30	13				

**Collari serie pesante
in polipropilene,
poliammide autoestinguente,
alluminio o gomma**

**Heavy duty clamps
in polypropylene,
self-extinguishing polyamide,
aluminium or rubber**



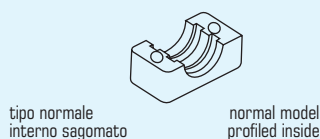
gruppo - group	diametro tubo pipe diameter			tipo di collare clamp type				dimensioni in mm dimension in mm						
	Ø mm	pollici / inches G	Ø O.D.	AMP.P polipropilene polypropylene	MMP.P poliammide self-extinguishing	RMP.P gomma rubber	AMLL.P alluminio aluminium	a	b	c	d	f	s	e
1	6			AMP.P ₁ 06	MMP.P ₁ 06	RMP.P ₁ 06	AMLL.P ₁ 06	30	55	33	32	73	8	M10x45
	6,4		1/4"	AMP.P ₁ 6,4	MMP.P ₁ 6,4	RMP.P ₁ 6,4	AMLL.P ₁ 6,4							
	8		5/16"	AMP.P ₁ 08	MMP.P ₁ 08	RMP.P ₁ 08	AMLL.P ₁ 08							
	9,5		3/8"	AMP.P ₁ 9,5	MMP.P ₁ 9,5	RMP.P ₁ 9,5	AMLL.P ₁ 9,5							
	10	1/8"		AMP.P ₁ 10	MMP.P ₁ 10	RMP.P ₁ 10	AMLL.P ₁ 10							
	12			AMP.P ₁ 12	MMP.P ₁ 12	RMP.P ₁ 12	AMLL.P ₁ 12							
	12,7		1/2"	AMP.P ₁ 12,7	MMP.P ₁ 12,7	RMP.P ₁ 12,7	AMLL.P ₁ 12,7							
	13,5	1/4"		AMP.P ₁ 1/4"	MMP.P ₁ 1/4"	RMP.P ₁ 1/4"	AMLL.P ₁ 1/4"							
	14			AMP.P ₁ 14	MMP.P ₁ 14	RMP.P ₁ 14	AMLL.P ₁ 14							
	15			AMP.P ₁ 15	MMP.P ₁ 15	RMP.P ₁ 15	AMLL.P ₁ 15							
2	16		5/8"	AMP.P ₁ 16	MMP.P ₁ 16	RMP.P ₁ 16	AMLL.P ₁ 16	30	70	45	48	85	8	M10x60
	17,2	3/8"		AMP.P ₁ 3/8"	MMP.P ₁ 3/8"	RMP.P ₁ 3/8"	AMLL.P ₁ 3/8"							
	18			AMP.P ₁ 18	MMP.P ₁ 18	RMP.P ₁ 18	AMLL.P ₁ 18							
	19		3/4"	AMP.P ₂ 19	MMP.P ₂ 19	RMP.P ₂ 19	AMLL.P ₂ 19							
	20			AMP.P ₂ 20	MMP.P ₂ 20	RMP.P ₂ 20	AMLL.P ₂ 20							
	21,3	1/2"		AMP.P ₂ 1/2"	MMP.P ₂ 1/2"	RMP.P ₂ 1/2"	AMLL.P ₂ 1/2"							
	22		7/8"	AMP.P ₂ 22	MMP.P ₂ 22	RMP.P ₂ 22	AMLL.P ₂ 22							
	25			AMP.P ₂ 25	MMP.P ₂ 25	RMP.P ₂ 25	AMLL.P ₂ 25							
	25,4		1"	AMP.P ₂ 25,4	MMP.P ₂ 25,4	RMP.P ₂ 25,4	AMLL.P ₂ 25,4							
	26,9	3/4"		AMP.P ₂ 3/4"	MMP.P ₂ 3/4"	RMP.P ₂ 3/4"	AMLL.P ₂ 3/4"							
3	28			AMP.P ₂ 28	MMP.P ₂ 28	RMP.P ₂ 28	AMLL.P ₂ 28	30	85	60	60	102	8	M10x70
	30			AMP.P ₂ 30	MMP.P ₂ 30	RMP.P ₂ 30	AMLL.P ₂ 30							
	30			AMP.P ₃ 30	MMP.P ₃ 30	RMP.P ₃ 30	AMLL.P ₃ 30							
	32		1 1/4"	AMP.P ₃ 32	MMP.P ₃ 32	RMP.P ₃ 32	AMLL.P ₃ 32							
	33,7	1"		AMP.P ₃ 1"	MMP.P ₃ 1"	RMP.P ₃ 1"	AMLL.P ₃ 1"							
	35			AMP.P ₃ 35	MMP.P ₃ 35	RMP.P ₃ 35	AMLL.P ₃ 35							
	38		1 1/2"	AMP.P ₃ 38	MMP.P ₃ 38	RMP.P ₃ 38	AMLL.P ₃ 38							
4	40			AMP.P ₃ 40	MMP.P ₃ 40	RMP.P ₃ 40	AMLL.P ₃ 40	45	120	90	90	140	10	M12x100
	42			AMP.P ₃ 42	MMP.P ₃ 42	RMP.P ₃ 42	AMLL.P ₃ 42							
	42,4	1 1/4"		AMP.P ₃ 1 1/4"	MMP.P ₃ 1 1/4"	RMP.P ₃ 1 1/4"	AMLL.P ₃ 1 1/4"							
	44,5		1 3/4"	AMP.P ₄ 44,5	MMP.P ₄ 44,5	RMP.P ₄ 44,5	AMLL.P ₄ 44,5							
	48,3	1 1/2"		AMP.P ₄ 1 1/2"	MMP.P ₄ 1 1/2"	RMP.P ₄ 1 1/2"	AMLL.P ₄ 1 1/2"							
	50			AMP.P ₄ 50	MMP.P ₄ 50	RMP.P ₄ 50	AMLL.P ₄ 50							
	50,8		2"	AMP.P ₄ 50,8	MMP.P ₄ 50,8	RMP.P ₄ 50,8	AMLL.P ₄ 50,8							
	55			AMP.P ₄ 55	MMP.P ₄ 55	RMP.P ₄ 55	AMLL.P ₄ 55							
	57		2 1/4"	AMP.P ₄ 57	MMP.P ₄ 57	RMP.P ₄ 57	AMLL.P ₄ 57							
	60,3	2"		AMP.P ₄ 2"	MMP.P ₄ 2"	RMP.P ₄ 2"	AMLL.P ₄ 2"							
	63,5		2 1/2"	AMP.P ₄ 63,5	MMP.P ₄ 63,5	RMP.P ₄ 63,5	AMLL.P ₄ 63,5							
65			AMP.P ₄ 65	MMP.P ₄ 65	RMP.P ₄ 65	AMLL.P ₄ 65								
70		2 3/4"	AMP.P ₄ 70	MMP.P ₄ 70	RMP.P ₄ 70	AMLL.P ₄ 70								

AMP.P*... = polipropilene / polypropylene
 ...H = interno liscio / smooth inside (per ordine di collari tipo H, aggiungere H dopo il codice / to order clamps type H, please put the H at the end of the code)

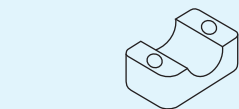
MMP.P... = polyamide / self-extinguishing

RMP.P... = gomma / rubber

AMLL.P... = alluminio / aluminium

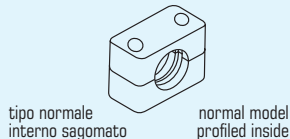


normal model
profiled inside

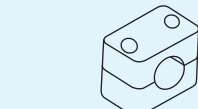


tipo H
interno liscio

H model
smooth inside

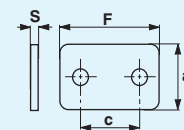
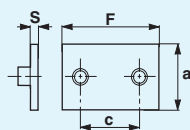


normal model
profiled inside



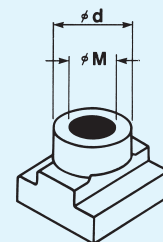
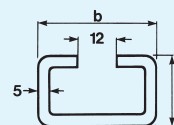
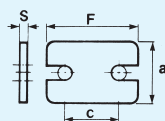
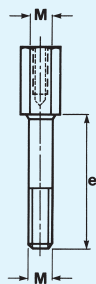
tipo H
interno liscio

H model
smooth inside



semi-collare clamp-half	coppia collari clamp body (2 halves)	piastra inferiore lower plate				piastra superiore upper plate			
		APINP				APSP			
AMP.P ... S	AMP.P ... C	a mm	F mm	c mm	S mm	a mm	F mm	c mm	S mm
AMP.P ₁ 06 S	AMP.P ₁ 06 C	APINP₁				APSP₁			
AMP.P ₁ 6,4 S	AMP.P ₁ 6,4 C	30	75	33	8	30	55	33	8
AMP.P ₁ 08 S	AMP.P ₁ 08 C								
AMP.P ₁ 9,5 S	AMP.P ₁ 9,5 C								
AMP.P ₁ 10 S	AMP.P ₁ 10 C								
AMP.P ₁ 12 S	AMP.P ₁ 12 C								
AMP.P ₁ 12,7 S	AMP.P ₁ 12,7 C								
AMP.P ₁ 1/4" S	AMP.P ₁ 1/4" C								
AMP.P ₁ 14 S	AMP.P ₁ 14 C								
AMP.P ₁ 15 S	AMP.P ₁ 15 C								
AMP.P ₁ 16 S	AMP.P ₁ 16 C								
AMP.P ₁ 3/8" S	AMP.P ₁ 3/8" C								
AMP.P ₁ 18 S	AMP.P ₁ 18 C								
AMP.P ₂ 19 S	AMP.P ₂ 19 C	APINP₂				APSP₂			
AMP.P ₂ 20 S	AMP.P ₂ 20 C	30	87	45	8	30	70	45	8
AMP.P ₂ 1/2" S	AMP.P ₂ 1/2" C								
AMP.P ₂ 22 S	AMP.P ₂ 22 C								
AMP.P ₂ 25 S	AMP.P ₂ 25 C								
AMP.P ₂ 25,4 S	AMP.P ₂ 25,4 C								
AMP.P ₂ 3/4" S	AMP.P ₂ 3/4" C								
AMP.P ₂ 28 S	AMP.P ₂ 28 C								
AMP.P ₂ 30 S	AMP.P ₂ 30 C								
AMP.P ₃ 30 S	AMP.P ₃ 30 C	APINP₃				APSP₃			
AMP.P ₃ 32 S	AMP.P ₃ 32 C	30	102	60	8	30	85	60	8
AMP.P ₃ 1" S	AMP.P ₃ 1" C								
AMP.P ₃ 35 S	AMP.P ₃ 35 C								
AMP.P ₃ 38 S	AMP.P ₃ 38 C								
AMP.P ₃ 40 S	AMP.P ₃ 40 C								
AMP.P ₃ 42 S	AMP.P ₃ 42 C								
AMP.P ₃ 1 1/4" S	AMP.P ₃ 1 1/4" C								
AMP.P ₄ 38 S	AMP.P ₄ 38 C	APINP₄				APSP₄			
AMP.P ₄ 42 S	AMP.P ₄ 42 C	45	140	90	10	45	120	90	10
AMP.P ₄ 1 1/4" S	AMP.P ₄ 1 1/4" C								
AMP.P ₄ 44,5 S	AMP.P ₄ 44,5 C								
AMP.P ₄ 1 1/2" S	AMP.P ₄ 1 1/2" C								
AMP.P ₄ 50 S	AMP.P ₄ 50 C								
AMP.P ₄ 50,8 S	AMP.P ₄ 50,8 C								
AMP.P ₄ 55 S	AMP.P ₄ 55 C								
AMP.P ₄ 57 S	AMP.P ₄ 57 C								
AMP.P ₄ 2" S	AMP.P ₄ 2" C								
AMP.P ₄ 63,5 S	AMP.P ₄ 63,5 C								
AMP.P ₄ 65 S	AMP.P ₄ 65 C								
AMP.P ₄ 70 S	AMP.P ₄ 70 C								

* La produzione standard è di colore verde, colore nero su richiesta.
 Standard production in green, black color on request.

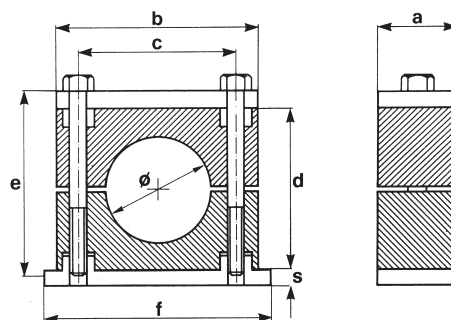


vite a testa esagonale hexagonal head screw	vite a testa esagonale allungata high hexagonal head screw	piastra superiore di sicurezza security upper plate				binari portanti spessore 5 mm rail		dado fissaggio binari rail nut	
AVTEP	AVTEAP	APMRSP				ABINP		ADESP	
M e mm	M e mm	a mm	F mm	c mm	S mm	b mm	h mm	M	Ø d mm
AVTEP₁	AVTEAP₁	APMRSP₁				ABINP-1	40 22	ADESP-1	
M10 45	M10 26	30	55	33	8			M10 18	
AVTEP₂	AVTEAP₂	APMRSP₂						ADESP-2	
M10 60	M10 41	30	70	45	8			M12 20	
AVTEP₃	AVTEAP₃	APMRSP₃							
M10 70	M10 52	30	85	60	8				
AVTEP₄	AVTEAP₄	APMRSP₄							
M12 100	M12 83	45	120	90	10				

* Altre piastre speciali sono a pag. 19
Other special plate are at page 19

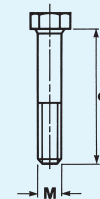
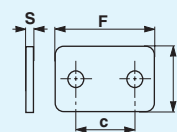
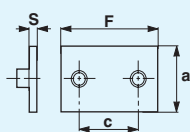
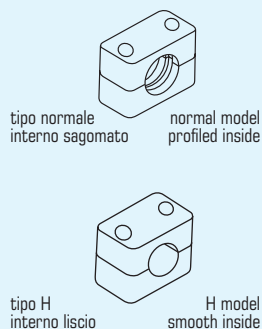
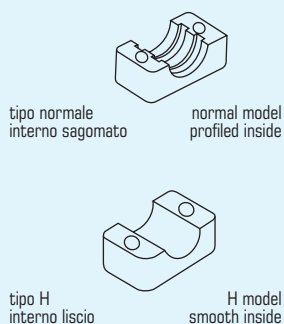
**Collari serie pesante
in polipropilene,
poliammide autoestinguente,
alluminio o gomma**

**Heavy duty clamps
in polypropylene,
self-extinguishing polyamide,
aluminium or rubber**



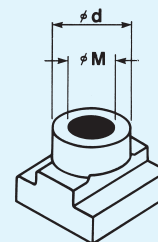
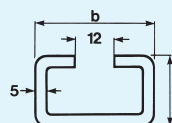
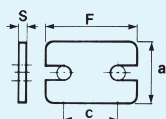
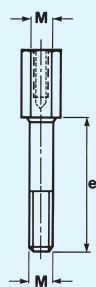
gruppo - group	diametro tubo pipe diameter			tipo di collare clamp type				dimensioni in mm dimension in mm						
	Ø mm	pollici/inches G	Ø O.D.	AMP.P polipropilene polypropylene	MMP.P polyamide self-extinguishing	RMP.P gomma rubber	AMLL.P alluminio aluminium	a	b	c	d	f	s	e
5	65			AMP.P ₅ 65	MMP.P ₅ 65	RMP.P ₅ 65	AMLL.P ₅ 65	60	152	122	120	180	10	M16x130
	70		2 ³ / ₄ "	AMP.P ₅ 70	MMP.P ₅ 70	RMP.P ₅ 70	AMLL.P ₅ 70							
	75			AMP.P ₅ 75	MMP.P ₅ 75	RMP.P ₅ 75	AMLL.P ₅ 75							
	76,1	2 ¹ / ₂ "	3"	AMP.P ₅ 2 ¹ / ₂ "	MMP.P ₅ 2 ¹ / ₂ "	RMP.P ₅ 2 ¹ / ₂ "	AMLL.P ₅ 2 ¹ / ₂ "							
	80			AMP.P ₅ 80	MMP.P ₅ 80	RMP.P ₅ 80	AMLL.P ₅ 80							
	82,5		3 ¹ / ₄ "	AMP.P ₅ 82,5	MMP.P ₅ 82,5	RMP.P ₅ 82,5	AMLL.P ₅ 82,5							
	88,9	3"	3 ¹ / ₂ "	AMP.P ₅ 3"	MMP.P ₅ 3"	RMP.P ₅ 3"	AMLL.P ₅ 3"							
6	88,9	3"	3 ¹ / ₂ "	AMP.P ₆ 3"	MMP.P ₆ 3"	RMP.P ₆ 3"	—	80	205	168	170	225	15	M20x190
	100			AMP.P ₆ 100	MMP.P ₆ 100	RMP.P ₆ 100	—							
	101,6	3 ¹ / ₂ "	4"	AMP.P ₆ 3 ¹ / ₂ "	MMP.P ₆ 3 ¹ / ₂ "	RMP.P ₆ 3 ¹ / ₂ "	—							
	108		4 ¹ / ₄ "	AMP.P ₆ 108	MMP.P ₆ 108	RMP.P ₆ 108	—							
	114,3	4"	4 ¹ / ₂ "	AMP.P ₆ 4"	MMP.P ₆ 4"	RMP.P ₆ 4"	—							
	127	4 ¹ / ₂ "	5"	AMP.P ₆ 4 ¹ / ₂ "	MMP.P ₆ 4 ¹ / ₂ "	RMP.P ₆ 4 ¹ / ₂ "	—							
	133		5 ¹ / ₂ "	AMP.P ₆ 133	MMP.P ₆ 133	RMP.P ₆ 133	—							
7	133		5 ¹ / ₄ "	AMP.P ₇ 133	MMP.P ₇ 133	RMP.P ₇ 133	—	90	250	205	200	270	15	M24x220
	139,7	5"	5 ¹ / ₂ "	AMP.P ₇ 5"	MMP.P ₇ 5"	RMP.P ₇ 5"	—							
	152,4	5 ¹ / ₂ "	6"	AMP.P ₇ 5 ¹ / ₂ "	MMP.P ₇ 5 ¹ / ₂ "	RMP.P ₇ 5 ¹ / ₂ "	—							
	165		6 ¹ / ₂ "	AMP.P ₇ 165	MMP.P ₇ 165	RMP.P ₇ 165	—							
	168,3	6"		AMP.P ₇ 6"	MMP.P ₇ 6"	RMP.P ₇ 6"	—							
8	168,3	6"		AMP.P ₈ 6"	—	—	—	120	320	265	270	340	25	M30x300
	177,8		7"	AMP.P ₈ 177,8	—	—	—							
	193,7		7 ⁵ / ₈ "	AMP.P ₈ 193,7	—	—	—							
	216		8 ¹ / ₂ "	AMP.P ₈ 216	—	—	—							
	219,1	8"		AMP.P ₈ 8"	—	—	—							

AMP.P*... = polipropilene / polypropylene MMP.P... = polyamide / self-extinguishing RMP.P... = gomma / rubber AMLL.P... = alluminio / aluminium
 ...H = interno liscio / smooth inside (per ordine di collari tipo H, aggiungere H dopo il codice / to order clamps type H, please put the H at the end of the code)



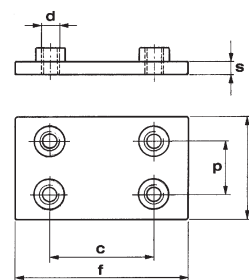
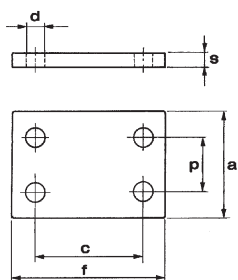
semi-collare clamp-half	coppia collari clamp body (2 halves)	piastra inferiore lower plate				piastra superiore upper plate				vite a testa esagonale hexagonal head screw	
		APINP				APSP				AVTEP	
AMP.P ... S	AMP.P ... C	a mm	F mm	c mm	S mm	a mm	F mm	c mm	S mm	M	e mm
		APINP₅				APSP₅				AVTEP₅	
AMP.P ₅ 65 S	AMP.P ₅ 65 C	60	180	122	10	60	152	122	10	M16	130
AMP.P ₅ 70 S	AMP.P ₅ 70 C										
AMP.P ₅ 75 S	AMP.P ₅ 75 C										
AMP.P ₅ 2 1/2" S	AMP.P ₅ 2 1/2" C										
AMP.P ₅ 80 S	AMP.P ₅ 80 C										
AMP.P ₅ 82,5 S	AMP.P ₅ 82,5 C										
AMP.P ₅ 3" S	AMP.P ₅ 3" C										
		APINP₆				APSP₆				AVTEP₆	
AMP.P ₆ 3" S	AMP.P ₆ 3" C	80	225	168	15	80	205	168	15	M20	190
AMP.P ₆ 100 S	AMP.P ₆ 100 C										
AMP.P ₆ 3 1/2" S	AMP.P ₆ 3 1/2" C										
AMP.P ₆ 108 S	AMP.P ₆ 108 C										
AMP.P ₆ 4" S	AMP.P ₆ 4" C										
AMP.P ₆ 4 1/2" S	AMP.P ₆ 4 1/2" C										
AMP.P ₆ 133 S	AMP.P ₆ 133 C										
		APINP₇				APSP₇				AVTEP₇	
AMP.P ₇ 133 S	AMP.P ₇ 133 C	90	270	205	15	90	250	205	15	M24	220
AMP.P ₇ 5" S	AMP.P ₇ 5" C										
AMP.P ₇ 5 1/2" S	AMP.P ₇ 5 1/2" C										
AMP.P ₇ 165 S	AMP.P ₇ 165 C										
AMP.P ₇ 6" S	AMP.P ₇ 6" C										
		APINP₈				APSP₈				AVTEP₈	
AMP.P ₈ 6" S	AMP.P ₈ 6" C	120	340	265	25	120	320	265	25	M30	300
AMP.P ₈ 177,8 S	AMP.P ₈ 177,8 C										
AMP.P ₈ 193,7 S	AMP.P ₈ 193,7 C										
AMP.P ₈ 216 S	AMP.P ₈ 216 C										
AMP.P ₈ 8" S	AMP.P ₈ 8" C										

* La produzione standard è di colore verde, colore nero su richiesta.
 Standard production in green, black color on request.



vite a testa esagonale allungata high hexagonal head screw	piastra superiore di sicurezza security upper plate				binari portanti spessore 5 mm rail	dado fissaggio binari rail nut
AVTEAP	APMRSP				ABINP	ADESP
M e mm	a mm	F mm	c mm	S mm	b mm h mm	M Ø d mm
AVTEAP₅	APMRSP₅					
M16 110	60	152	122	10	40 22	M16 20

Piastre doppie per serie pesante Double plates for heavy duty series

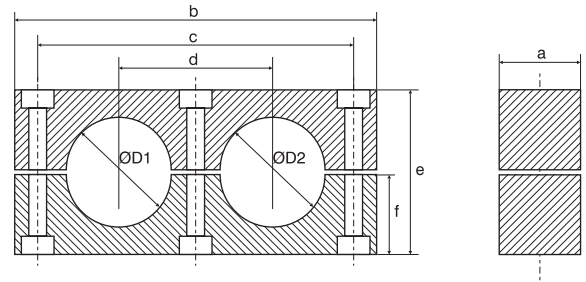


gruppo - group	piastra superiore doppia double upper plate					
	APSPD					
	a mm	f mm	s mm	c mm	p mm	d mm
1	APSPD₁					
	60	56	8	33	31	11
2	APSPD₂					
	60	70	8	45	31	11
3	APSPD₃					
	60	85	8	60	31	11
4	APSPD₄					
	90	116	10	90	46	14
5	APSPD₅					
	120	153	10	122	61	18

gruppo - group	piastra inferiore doppia double lower plate					
	APINPD					
	a mm	f mm	s mm	c mm	p mm	m
1	APINPD₁					
	60	74	8	33	31	M10
2	APINPD₂					
	60	86	8	45	31	M10
3	APINPD₃					
	60	100	8	60	31	M10
4	APINPD₄					
	90	140	10	90	46	M12
5	APINPD₅					
	120	180	10	122	61	M16

Collari doppi serie pesante in polipropilene o poliammide autoestinguente

Heavy duty double clamps in polypropylene and self-extinguishing polyamid



gruppo - group	diametro tubo pipe diameter		tipo di collare clamp type		dimensioni in mm dimension in mm					
	ØD1/ØD2 mm	pollici/inches G Ø	AMD.P polipropilene polypropylene	MMD.P poliammide self-extinguishing	a	b	c	d	e	f
4	19/19	3/4 / 3/4	AMD.P ₄ 19/19	MMD.P ₄ 19/19	30	115	90	45	48	24
	20/20		AMD.P ₄ 20/20	MMD.P ₄ 20/20						
	21,3/21,3	1/2 / 1/2	AMD.P ₄ 21,3/21,3	MMD.P ₄ 21,3/21,3						
	22/22	7/8 / 7/8	AMD.P ₄ 22/22	MMD.P ₄ 22/22						
	25,4/25,4		AMD.P ₄ 25,4/25,4	MMD.P ₄ 25,4/25,4						
26,9/26,9	3/4 / 3/4	AMD.P ₄ 26,9/26,9	MMD.P ₄ 26,9/26,9							
5	32/32	3" / 3 1/2"	AMD.P ₅ 32/32	MMD.P ₅ 32/32	30	144	120	60	60	30
	33,7/33,7		AMD.P ₅ 33,7/33,7	MMD.P ₅ 33,7/33,7						
	38/38	3 1/2" / 4"	AMD.P ₅ 38/38	MMD.P ₅ 38/38						
	40/40	4 1/4"	AMD.P ₅ 40/40	MMD.P ₅ 40/40						
	42/42	4" / 4 1/2"	AMD.P ₅ 42/42	MMD.P ₅ 42/42						

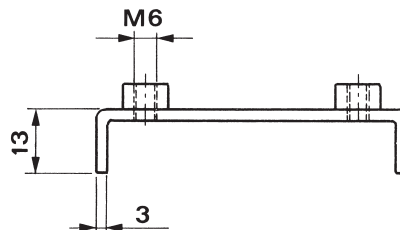
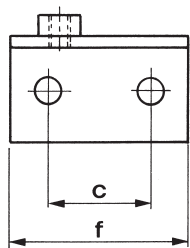
coppia collare clamp body (2 halves)		piastra inferiore lower plate					piastra superiore cover plate					vite a testa esagonale hexagonal head screw			
AMD.P polipropilene polypropylene	MMD.P poliammide self-extinguishing	APINDP					APSDP					AVTEDP			
		2c	Ø m	Ø D	s	f	a	2c	Ø m	s	b	a	M	e	
4	AMD.P ₄ 19/19 C	MMD.P ₄ 19/19 C	APINDP₄					APSDP₄					AVTEDP₄		
	AMD.P ₄ 20/20 C	MMD.P ₄ 20/20 C	90	10	18	8	130	30	90	11	8	115	30	M10	60
	AMD.P ₄ 21,3/21,3 C	MMD.P ₄ 21,3/21,3 C													
	AMD.P ₄ 22/22 C	MMD.P ₄ 22/22 C													
	AMD.P ₄ 25,4/25,4 C	MMD.P ₄ 25,4/25,4 C													
AMD.P ₄ 26,9/26,9 C	MMD.P ₄ 26,9/26,9 C														
5	AMD.P ₅ 32/32 C	MMD.P ₅ 32/32 C	APINDP₅					APSDP₅					AVTEDP₅		
	AMD.P ₅ 33,7/33,7 C	MMD.P ₅ 33,7/33,7 C	120	10	18	8	160	30	120	11	8	144	30	M10	70
	AMD.P ₅ 38/38 C	MMD.P ₅ 38/38 C													
	AMD.P ₅ 40/40 C	MMD.P ₅ 40/40 C													
	AMD.P ₅ 42/42 C	MMD.P ₅ 42/42 C													

* La produzione standard è di colore verde, colore nero su richiesta. / Standard production in green, black color on request.

Piastre speciali per serie standard Special plates for standard series

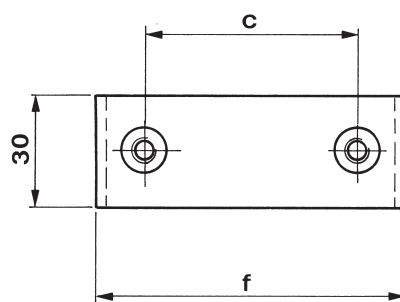
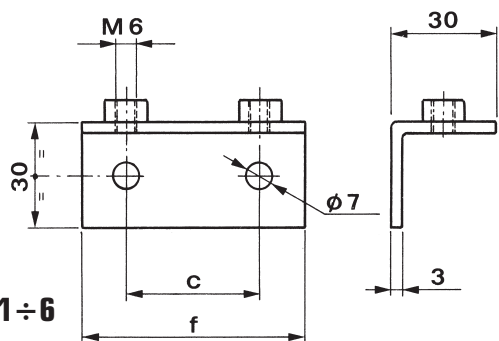
gruppo
group

0



gruppo
group

1 ÷ 6



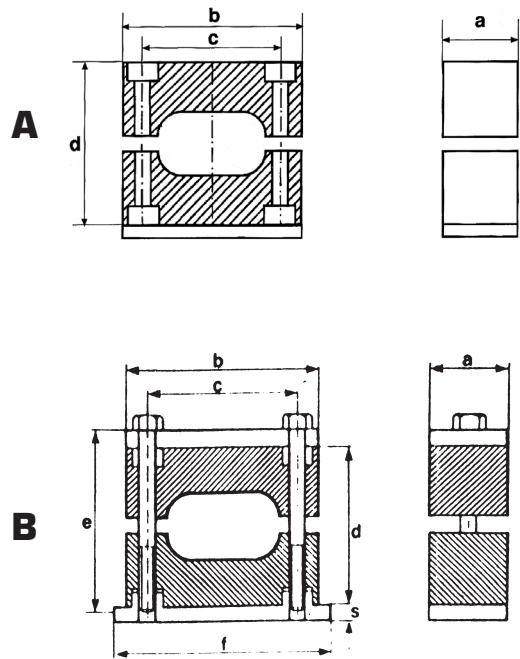
gruppo - group	piastra ad angolo angled plate	
	APINL	
	c mm	f mm
0	APINL₀	
	14	32
1	APINL₁	
	20	42
2	APINL₂	
	26	48
3	APINL₃	
	33	55
4	APINL₄	
	40	62
5	APINL₅	
	52	74
6	APINL₆	
	66	88

gruppo - group	piastra a ponte bridge plate	
	APINB	
	c mm	f mm
0	APINB₀	
	-	-
1	APINB₁	
	20	48
2	APINB₂	
	26	54
3	APINB₃	
	33	62
4	APINB₄	
	40	71
5	APINB₅	
	52	85
6	APINB₆	
	66	98

Collari serie standard per tubi gemellati

Standard series clamps for twin tubes

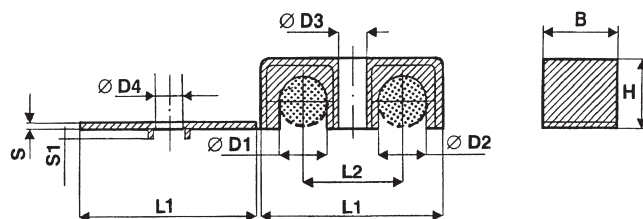
- A:** senza piastra superiore
without upper plate
- B:** con piastra superiore (a richiesta)
with upper plate (on request)



diametro tubo pipe diameter		tipo di collare clamp type			dimensioni in mm dimension in mm				
mm	pollici inches	polipropilene polypropylene	polyamide self-extinguishing	gomma rubber	a	b	c	d	viti screw
12	1/4	TBP 3 1/4	TBM 3 1/4	TBR 3 1/4	30	48	33	35	M6 x 30
14	5/16	TBP 4 5/16	TBM 4 5/16	TBR 4 5/16	30	52	40	42	M6 x 35
16	3/8	TBP 4 3/8	TBM 4 3/8	TBR 4 3/8	30	52	40	42	M6 x 35
20	1/2	TBP 5 1/2	TBM 5 1/2	TBR 5 1/2	30	68	52	58	M6 x 50

Elementi di fissaggio per tubi rigidi, flessibili e cavi elettrici

Clamps for hoses, pipes, tubes and cables



gruppo - group	diametro tubo D1 - D2 D1 - D2 pipe diameter		tipo collare clamp type	dimensioni in mm dimensions in mm										colore colour
	Ø mm	pollici inches Ø O.D.	ACSD polipropilene polypropylene	L1	L2	B	H	S	S1	D1	D2	D3	D4	
2	06 - 06	1/4 - 1/4	ACSD 06 - 06	38	22	16	14,2	2	3	6	6	6,9	7	bianco nero verde
	08 - 08	1/4 - 1/4	ACSD 08 - 08											white black green
	10 - 10	3/8 - 3/8	ACSD 10 - 10	38	22	16	14,5	2	3	10	10	6,9	7	bianco nero verde
	12 - 12	3/8 - 3/8	ACSD 12 - 12											white black green
3	15 - 15	5/8 - 5/8	ACSD 15 - 15	53	31	20	22,5	2	3	15	15	6,9	7	bianco nero verde white black green
4	19 - 19	3/4 - 3/4	ACSD 19 - 19	70	38	20	30	2	3	19	19	6,9	7	bianco nero verde white black green

Applicazioni: Oleodinamica e pneumatica, Strumentazione, Tecnologia automobilistica, Industria Macchine Utensili, Macchine per plastica, Macchine movimento terra, Macchine agricole, Lubrificazione, Ingegneria meccanica, ecc..

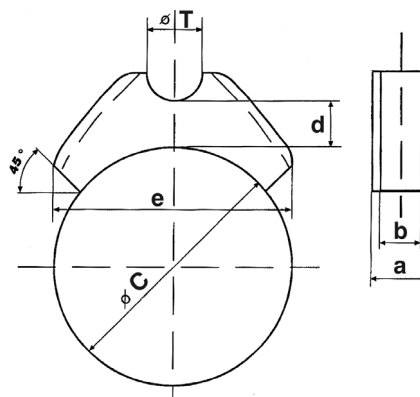
Applications: Oleodynamics and pneumatics, Instrumentation and Automotive Technology, Machine Tool Industry, Gooseneck machines, Earth moving machines, Farm machines, Lubrification, Mechanical Engineering, and so on.

Supporto tra tubo e cilindro

Pipe clamp for cylinder

materiale - material: **PVC**

△ Shore = **60°C - 284°F**




gruppo - group	codice code	Ø cilindro C - Ø cylinder C		Ø tubo T - Ø tube T		dimensioni in mm dimensions in mm			
		mm	inc. O.D.	mm	inc. O.D.	a	b	d	e
1	STF 12/50-70	50 ÷ 70	1,96 ÷ 2,75	12	0,47	23	14	12	72
	STF 12/60-80	60 ÷ 80	2,36 ÷ 3,15						
	STF 12/70-90	70 ÷ 90	2,75 ÷ 3,54						
	STF 12/80-100	80 ÷ 100	3,15 ÷ 3,94						
	STF 12/90-110	90 ÷ 110	3,54 ÷ 4,33						
	STF 12/100-120	100 ÷ 120	3,94 ÷ 4,72						
	STF 12/110-130	110 ÷ 130	4,33 ÷ 5,12						
	STF 12/125-150	125 ÷ 150	4,92 ÷ 5,90						
	STF 12/145-170	145 ÷ 170	5,71 ÷ 6,69						
	STF 12/165-200	165 ÷ 200	6,49 ÷ 7,87						
2	STF 20/50-70	50 ÷ 70	1,96 ÷ 2,75	20	0,78	23	14	12	72
	STF 20/60-80	60 ÷ 80	2,36 ÷ 3,15						
	STF 20/70-90	70 ÷ 90	2,75 ÷ 3,54						
	STF 20/80-100	80 ÷ 100	3,15 ÷ 3,94						
	STF 20/90-110	90 ÷ 110	3,54 ÷ 4,33						
	STF 20/100-120	100 ÷ 120	3,94 ÷ 4,72						
	STF 20/110-130	110 ÷ 130	4,33 ÷ 5,12						
	STF 20/125-150	125 ÷ 150	4,92 ÷ 5,90						
	STF 20/145-170	145 ÷ 170	5,71 ÷ 6,69						
	STF 20/165-200	165 ÷ 200	6,49 ÷ 7,87						
3	STF 25/50-70	50 ÷ 70	1,96 ÷ 2,75	25	0,98	23	14	12	72
	STF 25/60-80	60 ÷ 80	2,36 ÷ 3,15						
	STF 25/70-90	70 ÷ 90	2,75 ÷ 3,54						
	STF 25/80-100	80 ÷ 100	3,15 ÷ 3,94						
	STF 25/90-110	90 ÷ 110	3,54 ÷ 4,33						
	STF 25/100-120	100 ÷ 120	3,94 ÷ 4,72						
	STF 25/110-130	110 ÷ 130	4,33 ÷ 5,12						
	STF 25/125-150	125 ÷ 150	4,92 ÷ 5,90						
	STF 25/145-170	145 ÷ 170	5,71 ÷ 6,69						
	STF 25/165-200	165 ÷ 200	6,49 ÷ 7,87						

Applicazioni: Oleodinamica e pneumatica - Macchine utensili - Macchine movimento terra - Macchine agricole - Industria meccanica - Industria in generale - ecc.

Applications: oleodynamic and pneumatic - Machines tools - Earth-moving machines - Farm machines - Mechanical and metallurgical industry - Oil industry - and so on.

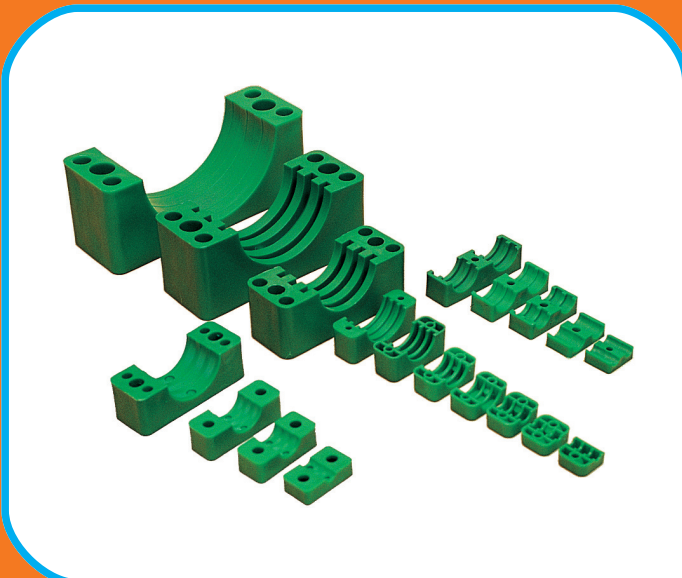
Caratteristiche materiali

Materials properties

	Metodo di prova Test method	Unità di misura Units	Polipropilene Copolimero Metaphasic Copolymers	Poliamide 6-6 Polyamide 6-6	Gomma termoplastica Thermoplastic Rubber	Alluminio Aluminium
FISICHE Physical						
Peso specifico Specific gravity	ASTM D 792	g/cm ³	0,9	1,34	0,964	
Assorbimento d'acqua (24h a 23°C in immersione) Water absorption (24h at 23°C immersion)	ASTM D 570	%		1		
Ritiro lineare allo stampaggio Mould shrinkage	ASTM D 955	%	1,5 ÷ 2,4	0,2 ÷ 0,5	0,4 ÷ 0,8	
MECCANICHE Mechanical						
Carico di snervamento a trazione Tensile strenght at yield	ASTM D 638	N/mm ²	27			
Carico di rottura a trazione Tensile strenght	ASTM D 638	N/mm ²		150	1400	170 ÷ 220
Modulo elastico a trazione Tensile modulus	ASTM D 638	N/mm ²	1400	8200	530	68000 ÷ 78000
Allungamento alla rottura Ultimate elongation	ASTM D 638	%	12	3	750	
Resistenza all'urto con intaglio IZOD 6.4 mm IZOD impact strenght notched 6.4 mm	ASTM D 256	J/m	85	70	71 SHORE A	
Durezza Rockwell, scala R + L Rockwell hardness, scale R + L	ASTM D 785	—	R84	(L) 150		
TERMICHE Thermal						
Temperatura di inflessione 1.82 N mm ² H.D.T. - heat distorsion temperature 1.82 N mm ²	ASTM D 648	°C	88	240	70 ÷ 90	
Temperatura di fusione Melting point	ASTM D 789	°C	150	258		380
Coefficiente di espansione termico lineare Coefficient of linear thermal expansion	ASTM D 696	°C		2,5 - 10 ⁵		24 - 10 ⁻⁵ (1,6mm: nero/black)
Autoestinguenza Flammability	UL 94	—		V-0  (1,6mm: nero/black)		
Temperatura max. d'esercizio Max. exercise temperature	—	°C	-30 +90	-40 +180	-40 +80	+350
ELETTRICHE Electrical						
Rigidità dielettrica - spessore 3 mm Dielectric strenght - thickness 3 mm	ASTM D 149	kV/mm		20		20
Costante dielettrica a 1 kHz Dielectric constant, 1kHz	ASTM D 150	—		4,5		
Resistività di volume Volume resistivity	ASTM D 257	Phm. cm ²	10 ¹⁸	4,5 - 10 ¹⁵		4,5 - 10 ¹⁵
Fattore di dissipazione a 1 kHz Dissipation factor, 1 kHz	DIN 53483	—		0,018		
Resistenza alle correnti striscianti KA sol. A Tracking resistance KA sol. A	DIN 53480	—	3C	KA 3b	KA 3b	KA 3b
Resistenza alle correnti striscianti KB sol. A Tracking resistance KB sol. A	DIN 53480	V	> 680	450		
Resistenza alle correnti striscianti KC sol. F Tracking resistance KC sol. F	DIN 53480	V	> 600	450		450

AEGI CLAMPS declina ogni tipo di responsabilità attinente al prodotto ad eccezione dei vizi derivanti da difetto di fabbricazione. I valori di riferimento, menzionati nel catalogo, devono essere considerati indicativi e non assoluti.

AEGI CLAMPS si riserva di apportare tutte le modifiche che riterrà opportune senza obbligo di preavviso.



I-20062 Cassano d'Adda/MI Italy Via A. Einstein, 54/56 tel. +39 0363 657.88 - fax +39 0363 65.797
e-mail: aegi@aegiclamps.it - aegiclamps@tin.it - www.aegiclamps.it
sales dep.: eloisia@aegiclamps.it - uff. comm. Italia: allegri@aegiclamps.it

AEGI 30062007