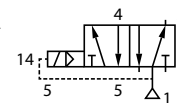


Maneuvering valves
Valves de manoeuvre



Solenoid operated - pilot spring
Vannes avec actionnement électrique mono-stable

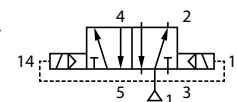


Part nº Referencia	THREAD ROSCA	€
NEU100070	1/8"	21,27
NEU100073	1/8"	18,32
NEU100075	1/4"	19,75
NEU100080	3/8"	22,03
NEU100085	1/2"	49,73
NEU100086 *	1/2"	330,12

Until end of stock / Jusqu'à fin du stock



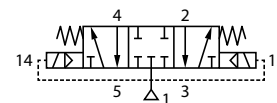
Solenoid operated - double pilot bi-stable
Vannes avec actionnement électrique bi-stable



Part nº Referencia	THREAD ROSCA	€
NEU100090	1/8"	27,33
NEU100093	1/8"	29,18
NEU100095	1/4"	31,01
NEU100100	3/8"	33,64
NEU100105	1/2"	57,79



Solenoid operated - C.C.
Vannes avec actionnement électrique centre fermé



Part nº Referencia	THREAD ROSCA	€
NEU100110	1/8"	58,56
NEU100113	1/8"	61,39
NEU100115	1/4"	77,72
NEU100118	3/8"	91,81
NEU100120	1/2"	100,74



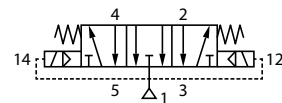
Electric foot pedal
Pédales eléctricas

Part nº Referencia	DESCRIPTION DESCRIPCIÓN	€
PML	Sin protección	47,13

Maneuvering valves
Valves de manoeuvre

Solenoid operated - C.E.

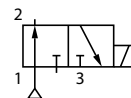
Vannes avec actionnement électrique centre ouvert



Part n° Referencia	THREAD ROSCA	€
NEU100125	1/8"	61,51
NEU100128	1/8"	64,49
NEU100130	1/4"	61,51
NEU100133	3/8"	77,58
NEU100135	1/2"	100,74

Solenoid operated 3/2 N.O.

Vannes avec actionnement électrique 3/2- N.O.

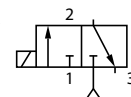


Part n° Referencia	THREAD ROSCA	€
NEU100620	1/8"	20,75
NEU100623	1/8"	17,37
NEU100625	1/4"	18,44
NEU100628	3/8"	21,43
NEU100630	1/2"	45,86
NEU100635 *	3/4"	653,82

Until end of stock / Jusqu'à fin du stock

Solenoid operated 3/2 N.C.

Vannes avec actionnement électrique 3/2- N.F.



Part n° Referencia	THREAD ROSCA	€
NEU100600	1/8"	20,98
NEU100603	1/8"	17,37
NEU100605	1/4"	18,98
NEU100608	3/8"	21,43
NEU100610	1/2"	30,49
NEU100615 *	3/4"	653,82

Until end of stock / Jusqu'à fin du stock

Maneuvering valves
Valves de manoeuvre



Coils and connectors
Bobines et connecteurs

Part nº Referencia	DESCRIPTION DESCRIPCIÓN	VOLTAGE (V) VOLTAJE (V)	POWER (W) POTENCIA (W)	€
NEU100221	Bobina 1/8	12 DC	2.8W	4,80
NEU100226	Bobina 1/8	24 DC	2.8W	4,84
NEU100231	Bobina 1/8	24 AC	3.0VA	4,84
NEU100236	Bobina 1/8	110 AC	3.0VA	4,84
NEU100241	Bobina 1/8	220AC	3.0VA	4,84
NEU100215AC	Conector estándar	AC	--	2,42
NEU100215DC	Conector estándar	DC	--	2,42
NEU100220	Bobina	12 VDC	5W	4,84
NEU100216DC	Conector estándar 1/8	DC	--	1,81
NEU100216AC	Conector estándar 1/8	AC	--	1,81
NEU100225	Bobina	24 VDC	4,8W	4,80
NEU100230	Bobina	24/50 V	5.0VA	4,84
NEU100235	Bobina	110/50V	5.0VA	4,84
NEU100240	Bobina	220/50V	5.0VA	4,84

Subplates for pneumatic valves 3/2
Plaques de base pour valves pneumatiques 3/2



Part nº Referencia	THREAD ROSCA	ELEMENTS NR. Nº ELEMENTOS	€
NEU100800	1/8" BSP	2	10,74
NEU100805	1/8" BSP	3	15,02
NEU100810	1/8" BSP	4	19,37
NEU100815	1/8" BSP	5	23,65
NEU100820	1/8" BSP	6	27,93
NEU100825	1/8" BSP	7	32,28
NEU100830	1/8" BSP	8	36,56
NEU100835	1/4" BSP	2	10,74
NEU100840	1/4" BSP	3	15,02
NEU100845	1/4" BSP	4	19,37
NEU100850	1/4" BSP	5	23,65
NEU100855	1/4" BSP	6	27,93
NEU100860	1/4" BSP	7	32,28
NEU100865	1/4" BSP	8	36,56
NEU100870	3/8" BSP	2	18,39
NEU100875	3/8" BSP	3	25,76
NEU100880	3/8" BSP	4	33,06
NEU100885	3/8" BSP	5	40,42
NEU100890	3/8" BSP	6	47,72
NEU100895	3/8" BSP	7	55,09
NEU100900	3/8" BSP	8	62,39
NEU100905	1/2" BSP	2	34,95
NEU100910	1/2" BSP	3	49,34
NEU100915	1/2" BSP	4	63,72
NEU100920	1/2" BSP	5	78,04
NEU100925	1/2" BSP	6	92,43
NEU100930	1/2" BSP	7	106,74
NEU100935	1/2" BSP	8	121,13

Maneuvering valves
Valves de manoeuvre

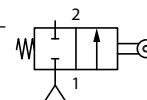


Subplates for pneumatic valves 5/2
Plaques de base pour valves pneumatiques 5/2

Part n° Referencia	THREAD ROSCA	ELEMENTS NR. N° ELEMENTOS	€
NEU100940	1/4" BSP	2	10,74
NEU100945	1/4" BSP	3	15,02
NEU100950	1/4" BSP	4	19,37
NEU100955	1/4" BSP	5	23,65
NEU100960	1/4" BSP	6	27,93
NEU100965	1/4" BSP	7	32,28
NEU100970	1/4" BSP	8	36,56
NEU100975	1/4" BSP	2	9,83
NEU100980	1/4" BSP	3	13,76
NEU100985	1/4" BSP	4	17,69
NEU100990	1/4" BSP	5	21,62
NEU100995	1/4" BSP	6	25,55
NEU101000	1/4" BSP	7	29,48
NEU101005	1/4" BSP	8	33,48
NEU101010	3/8" BSP	2	15,30
NEU101015	3/8" BSP	3	21,41
NEU101020	3/8" BSP	4	27,51
NEU101025	3/8" BSP	5	33,69
NEU101030	3/8" BSP	6	39,79
NEU101035	3/8" BSP	7	45,90
NEU101040	3/8" BSP	8	52,00
NEU101045	1/2" BSP	2	30,67
NEU101050	1/2" BSP	3	42,95
NEU101055	1/2" BSP	4	55,23
NEU101060	1/2" BSP	5	67,51
NEU101065	1/2" BSP	6	79,80
NEU101070	1/2" BSP	7	92,08
NEU101075	1/2" BSP	8	104,36



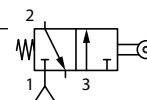
Fixed roller 2/2 Monostable NC
Vannes à rouleau bidirectionnel 2/2 Monostable NF



Part n° Referencia	THREAD ROSCA	DESCRIPTION DESCRIPCIÓN	€
NEU100370	1/8" BSP	3/2 Monoestable NC	13,78



Fixed roller 3/2 Monostable NF
Vannes à rouleau bidirectionnel 3/2 Monostable NF

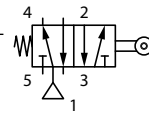


Part n° Referencia	THREAD ROSCA	DESCRIPTION DESCRIPCIÓN	€
NEU100375	1/8" BSP	3/2 Monoestable N.C.	19,22
NEU100380	1/4" BSP	3/2 Monoestable N.C.	19,22

Maneuvering valves
Valves de manoeuvre



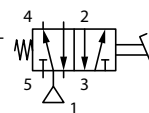
Fixed roller 5/2 Monostable
Vannes à rouleau bidirectionnel 5/2 Monostable



Part nº Referencia	THREAD ROSCA	DESCRIPTION DESCRIPCIÓN	€
NEU100390	1/8" BSP	5/2 Monoestable	21,36
NEU100395	1/4" BSP	5/2 Monoestable	21,36



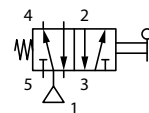
Pneumatic foot pedal bi-stable with protection
Pédales pneumatiques bi-stable avec protection



Part nº Referencia	THREAD ROSCA	DESCRIPTION DESCRIPCIÓN	MAX. PRESSURE (bar) PRESIÓN MAX. (bar)	€
PC 1/4 B	1/4" BSP	5/2 Biestable con protección	12	52,44



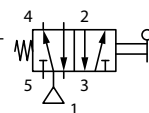
Pneumatic foot pedal monostable without protection
Pédales pneumatiques monostable sans protection



Part nº Referencia	THREAD ROSCA	DESCRIPTION DESCRIPCIÓN	MAX. PRESSURE (bar) PRESIÓN MAX. (bar)	€
PS 1/4	1/4" BSP	5/2 Monoestable sin protección	12	36,24



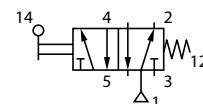
Pneumatic foot pedal monostable with protection
Pédales pneumatiques monostable avec protection



Part nº Referencia	THREAD ROSCA	DESCRIPTION DESCRIPCIÓN	MAX. PRESSURE (bar) PRESIÓN MAX. (bar)	€
PC 1/4 M	1/4" BSP	5/2 Monoestable con protección	12	48,58



Lever - pilot-spring 5/2 ways mono-stable
Vannes avec actionnement levier - 5/2 mono-stables

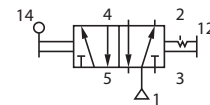


Part nº Referencia	THREAD ROSCA	€
NEU100505	1/8" BSP	31,01
NEU100510	1/4" BSP	45,40
NEU100515	3/8" BSP	45,40
NEU100518	1/2" BSP	51,73

Maneuvering valves Valves de manoeuvre



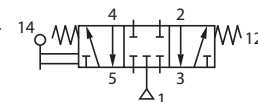
Lever - double-pilot 5/2 ways bi-stable
Vannes avec actionnement levier - 5/2 bi-stables



Part nº Referencia	THREAD ROSCA	€
NEU100520	1/8" BSP	26,98
NEU100525	1/4" BSP	23,26
NEU100530	3/8" BSP	26,61
NEU100533	1/2" BSP	52,55



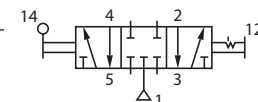
Lever pilot-spring 5/3 C.C. mono-stable
Vannes avec actionnement levier - 5/2 bi-stables



Part nº Referencia	THREAD ROSCA	€
NEU100535	1/8" BSP	41,89
NEU100540	1/4" BSP	45,25
NEU100545	3/8" BSP	45,25
NEU100548	1/2" BSP	52,55



Lever - 3 stable positions 5/3 C.C. bi-stable
Vannes avec actionnement levier - 5/3 C.F. bi-stables

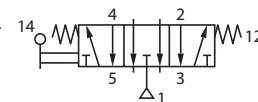


Part nº Referencia	THREAD ROSCA	DESCRIPTION DESCRIPCIÓN	€
NEU100546 *	1/4" BSP	Talla B	183,91
NEU100565	1/8" BSP	Talla B	40,40
NEU100570	1/4" BSP	Talla A	40,48
NEU100575	3/8" BSP	-	46,29
NEU100578	1/2" BSP	-	52,63

* Until end of stock / * Jusqu'à fin du stock



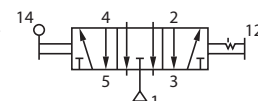
Lever - pilot-spring 5/3 O.C. mono-stable
Vannes avec actionnement levier - 5/3 C.O. mono-stables



Part nº Referencia	THREAD ROSCA	€
NEU100550	1/8" BSP	36,60
NEU100555	1/4" BSP	45,25
NEU100560	3/8" BSP	45,25
NEU100563	1/2" BSP	52,48



Lever - 3 stable positions 5/3 O.C. bi-stable
Vannes avec actionnement levier - 5/3 C.O. bi-stables

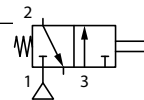


Part nº Referencia	THREAD ROSCA	€
NEU100580	1/8" BSP	36,60
NEU100585	1/4" BSP	45,25
NEU100590	3/8" BSP	45,25
NEU100593	1/2" BSP	52,55

Maneuvering valves
Valves de manoeuvre



Shrouded push button 3/2 NC
Vannes à poussoir court 3/2 NF

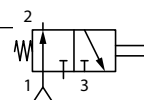


Part nº Referencia	THREAD ROSCA	DESCRIPTION DESCRIPCIÓN	€
NEU100260	1/8" BSP	3/2 N.C. ROJO	16,29
NEU100265 *	1/8" BSP	3/2 N.C.NEGRO	100,77

Until end of stock / Jusqu'à fin du stock



Shrouded push button 3/2 NO
Vannes à poussoir court 3/2 NO

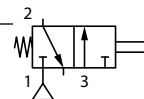


Part nº Referencia	THREAD ROSCA	DESCRIPTION DESCRIPCIÓN	€
NEU100270	1/8" BSP	3/2 N.A. ROJO	21,17
NEU100275 *	1/8" BSP	3/2 N.A. NEGRO	111,20

Until end of stock / Jusqu'à fin du stock



Shrouded push button 3/2 NC
Vannes à poussoir court 3/2 NF

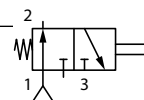


Part nº Referencia	THREAD ROSCA	DESCRIPTION DESCRIPCIÓN	€
NEU100280	1/8" BSP	3/2 N.C. ROJO	22,64
NEU100285 *	1/8" BSP	3/2 N.C. NEGRO	100,77

Until end of stock / Jusqu'à fin du stock



Shrouded push button 3/2 NO
Vannes à poussoir court 3/2 NO

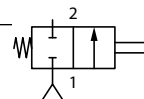


Part nº Referencia	THREAD ROSCA	DESCRIPTION DESCRIPCIÓN	€
NEU100290	1/8" BSP	3/2 N.A. ROJO	29,40
NEU100295 *	1/8" BSP	3/2 N.A. NEGRO	111,20

Until end of stock / Jusqu'à fin du stock



Push button 2/2 NC
Vannes à poussoir normal 2/2 NF

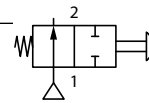


Part nº Referencia	THREAD ROSCA	DESCRIPTION DESCRIPCIÓN	€
NEU100300	1/8" BSP	2/2 N.C.	16,29

Maneuvering valves
Valves de manoeuvre



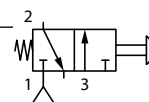
Push button 2/2 NO
Vannes à poussoir normal 2/2 NO



Part n° Referencia	THREAD ROSCA	DESCRIPTION DESCRIPCIÓN	€
NEU100305	1/8" BSP	2/2 N.A.	21,17



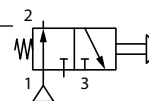
Push button 3/2 NC
Vannes à poussoir normal 3/2 NF



Part n° Referencia	THREAD ROSCA	DESCRIPTION DESCRIPCIÓN	€
NEU100310	1/4" BSP	3/2 N.C.	22,64



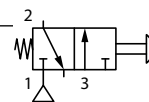
Push button 3/2 NO
Vannes à poussoir normal 3/2 NO



Part n° Referencia	THREAD ROSCA	DESCRIPTION DESCRIPCIÓN	€
NEU100315	1/4" BSP	3/2 N.A.	29,40



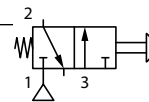
Head push button 3/2 NC
Vannes à poussoir d'urgence 3/2 NF



Part n° Referencia	THREAD ROSCA	DESCRIPTION DESCRIPCIÓN	€
NEU100320	1/8" BSP	3/2 N.C. ROJO	13,78



Head push button 3/2 NC Bi-stable
Vannes à poussoir d'urgence 3/2 NF Bi-stable

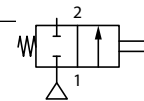


Part n° Referencia	THREAD ROSCA	DESCRIPTION DESCRIPCIÓN	€
NEU100330	1/8" BSP	3/2 N.C. ROJO	19,16

Maneuvering valves
Valves de manoeuvre



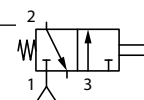
Pin valve 2/2 Monostable
Vanne fin de course 2/2 Mono-stable



Part n° Referencia	THREAD ROSCA	DESCRIPTION DESCRIPCIÓN	€
NEU100400 *	1/8" BSP	2/2 Monoestable NC	45,71



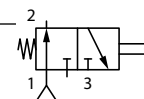
Pin valve 3/2 Monostable NC
Vanne fin de course 3/2 Mono-stable NF



Part n° Referencia	THREAD ROSCA	DESCRIPTION DESCRIPCIÓN	€
NEU100415 *	1/2" BSP	3/2 Monoestable N.C.	112,53



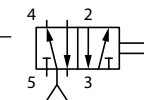
Pin valve 3/2 Monostable NO
Vanne fin de course 3/2 Mono-stable NO



Part n° Referencia	THREAD ROSCA	DESCRIPTION DESCRIPCIÓN	€
NEU100430 *	1/2" BSP	3/2 Monoestable N.A.	120,82



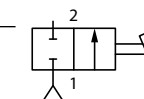
Pin valve 5/2 Bi-stable
Vanne fin de course 5/2 Bi-stable



Part n° Referencia	THREAD ROSCA	DESCRIPTION DESCRIPCIÓN	€
NEU100435 *	1/8" BSP	5/2 Biestable	96,50
NEU100440 *	1/4" BSP	5/2 Biestable	133,92



Selector valves rotating lever 2/2 Bi-stable
Vannes sélectrices à levier tournant 2/2 Bi-stable

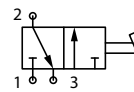


Part n° Referencia	THREAD ROSCA	DESCRIPTION DESCRIPCIÓN	€
NEU100340	1/8" BSP	3/2 Biestable	13,78

Maneuvering valves
Valves de manoeuvre



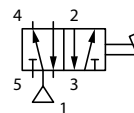
Selector valves rotating lever 3/2 Bi-stable
Vannes sélectrices à levier tournant 3/2 Bi-stable



Part nº Referencia	THREAD ROSCA	DESCRIPTION DESCRIPCIÓN	€
NEU100345	1/8" BSP	3/2 Biestable	24,87



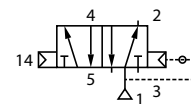
Selector valves rotating lever 5/2 Bi-stable
Vannes sélectrices à levier tournant 5/2 Bi-stable



Part nº Referencia	THREAD ROSCA	DESCRIPTION DESCRIPCIÓN	€
NEU100350	1/8" BSP	5/2 Biestable	19,98



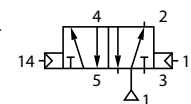
Pneumatically actuated - pilot spring
Vannes avec actionnement pneum. mono-stable



Part nº Referencia	THREAD ROSCA	€
NEU100000	1/8"	20,97
NEU100005	1/4"	19,95
NEU100010	3/8"	24,45
NEU100015	1/2"	39,28



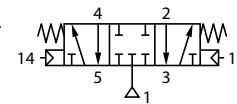
Pneumatically actuated - double pilot
Vannes avec actionnement pneum. bi-stable



Part nº Referencia	THREAD ROSCA	€
NEU100020	1/8"	34,02
NEU100025	1/4"	28,96
NEU100030	3/8"	34,36
NEU100035	1/2"	56,15



Pneumatically actuated - C.C.
Vannes avec actionnement pneum. centre fermé

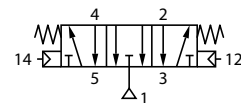


Part nº Referencia	THREAD ROSCA	€
NEU100040	1/8"	71,31
NEU100045	1/4"	59,36
NEU100050	1/2"	80,12

Maneuvering valves
Valves de manoeuvre



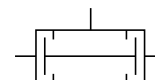
Pneumatically actuated - C.E.
Vannes avec actionnement pneum. centre ouvert



Part n° Referencia	THREAD ROSCA	€
NEU100055	1/8"	78,42
NEU100060	1/4"	61,82
NEU100065	1/2"	88,12



Sleeve valves
Vannes de passage tiroir 3 voies



Part n° Referencia	THREAD ROSCA	€
6060 1/8	1/8"	19,51
6060 1/4	1/4"	24,22
6060 3/8	3/8"	28,75
6060 1/2	1/2"	39,19



Drain cock
Robinet de purge

Part n° Referencia	THREAD ROSCA	€
16A 1/2	1/2"	5,02
16A 1/4	1/4"	3,93
16A 1/8	1/8"	3,54
16A 3/8	3/8"	4,12

Maneuvering valves
Valves de manoeuvre



Nickel-plated brass silencer (long)
Silencieux en bronze long

Part n° Referencia	THREAD ROSCA	€
SE 1/8	1/8"	0,65
SE 1/4	1/4"	3,83
SE 3/8	3/8"	6,80
SE 1/2	1/2"	8,88



Nickel-plated brass silencer (short)
Silencieux en bronze court

Part n° Referencia	THREAD ROSCA	€
SCQ 1/8	1/8"	2,23
SCQ 1/4	1/4"	3,26
SCQ 3/8	3/8"	5,93
SCQ 1/2	1/2"	8,72



Steel silencer
Silencieux acier

Part n° Referencia	THREAD ROSCA	€
SFE 1/8	1/8"	1,33
SFE 1/4	1/4"	1,49
SFE 3/8	3/8"	1,18
SFE 1/2	1/2"	1,54



Regulator silencer
Silencieux

Part n° Referencia	THREAD ROSCA	MAX. PRESSURE (bar) PRESIÓN MAX. (bar)	€
SVE 1/8	1/8"	12	5,33
SVE 1/4	1/4"	12	5,71
SVE 3/8	3/8"	12	9,81
SVE 1/2	1/2"	12	10,22



Nebulizer
Nébuliseur

Part n° Referencia	DESCRIPTION DESCRIPCIÓN	€
NEU100500 *	Rectangular	163,32
NEU100501	Cuadrado	65,95

Accesorial valve
Valve accessorielle



Ball valve female - female
Robinet mini femelle-femelle

Part n° Referencia	THREAD ROSCA	€
6300 1/8	1/8"	10,62
6300 1/4	1/4"	11,08
6300 3/8	3/8"	11,58
6300 1/2	1/2"	15,41



Ball valve male - female
Robinet mini mâle-femelle

Part n° Referencia	THREAD ROSCA	€
6310 1/8	1/8"	10,62
6310 1/4	1/4"	11,08
6310 3/8	3/8"	11,46
6310 1/2	1/2"	15,32

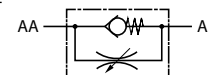


Mini ball valve female - female
Robinet mini hexagonal femelle-femelle

Part n° Referencia	THREAD ROSCA	€
6065 1/8	1/8"	9,32
6065 1/4	1/4"	9,32
6065 3/8	3/8"	8,94
6065 1/2	1/2"	11,28



Uni-directional flow regulator
Régulateurs de débit unidirectionnels



Part n° Referencia	THREAD ROSCA	€
8850 1/8	1/8"	17,35
8850 1/4	1/4"	23,13
8850 3/8	3/8"	46,81
8850 1/2	1/2"	51,25



Bi-directional flow regulator
Régulateurs de débit bidirectionnels

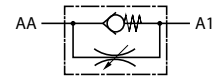


Part n° Referencia	THREAD ROSCA	€
8860 1/8	1/8"	17,35
8860 1/4	1/4"	23,13
8860 3/8	3/8"	46,81
8860 1/2	1/2"	51,25

Accesorial valve
Valve accessorielle



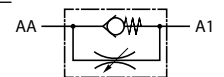
Quick flow regulator for cylinder
Régulateurs de débit rapides cylindriques



Part n° Referencia	PIPE TUBO	THREAD ROSCA	€
8965 6/4 1/8	6/4 mm	1/8"	18,58
8965 6/4 1/4	6/4 mm	1/4"	20,90
8965 8/6 1/8	8/6 mm	1/8"	18,58
8965 8/6 1/4	8/6 mm	1/4"	20,90
8965 8/6 3/8	8/6 mm	3/8"	30,44
8965 10/8 1/4	10/8 mm	1/4"	21,50
8965 10/8 3/8	10/8 mm	3/8"	30,60
8965 12/10 3/8	12/10 mm	3/8"	31,47
8965 12/10 1/2	12/10 mm	1/2"	39,57



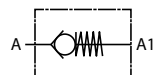
Flow regulator for cylinder
Régulateurs de débit cylindriques



Part n° Referencia	PIPE TUBO	THREAD ROSCA	€
8953 6 1/8	6 mm	1/8"	21,16
8953 6 1/4	6 mm	1/4"	22,91
8953 8 1/8	8 mm	1/8"	21,16
8953 8 1/4	8 mm	1/4"	22,91
8953 8 3/8	8 mm	3/8"	34,10
8953 10 1/4	10 mm	1/4"	23,60
8953 10 3/8	10 mm	3/8"	34,77
8953 12 3/8	12 mm	3/8"	34,77
8953 12 1/2	12 mm	1/2"	44,54



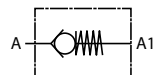
Non-return valve female-female
Antiretour femelle-femelle



Part n° Referencia	THREAD ROSCA	€
6062 1/8	1/8"	10,91
6062 1/4	1/4"	13,49
6062 3/8	3/8"	29,40
6062 1/2	1/2"	30,22



Retention valve with membrane
Vanne de retention avec membrane

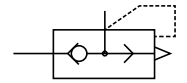


Part n° Referencia	THREAD ROSCA	€
6036 3/8	3/8"	11,46
6036 1/2	1/2"	11,53
6036 3/4	3/4"	16,26
6036 1	1"	21,10

Accesorial valve
Valve accessorielle



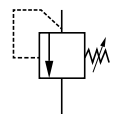
Quick exhaust valves
Vannes d'échappement rapide



Part n° Referencia	THREAD ROSCA	€
6050 1/8	1/8"	13,27
6050 1/4	1/4"	15,34
6050 3/8	3/8"	19,22
6050 1/2	1/2"	27,52



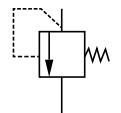
Adjustable relief valve
Vannes de sécurité réglable



Part n° Referencia	THREAD ROSCA	PRESSURE (Bar) TARAJE (BAR)	€
VS 1/8 8-12	1/8"	8 - 12	9,28
VS 1/8 13-16	1/8"	13 - 16	9,28
VS 1/4 8-12	1/4"	8 - 12	10,53
VS 1/4 13-16	1/4"	13 - 16	10,53
VS 3/8 8-12	3/8"	8 - 12	16,15
VS 3/8 13-16	3/8"	13 - 16	16,15
VS 1/2 0.5-5	1/2"	0,5 - 5	20,41
VS 1/2 8-12	1/2"	8 - 12	20,41
VS 1/2 13-16	1/2"	13 - 16	20,41
VS 3/4 8-12	3/4"	8 - 12	63,63
VS 3/4 13-16	3/4"	13 - 16	63,63
VS 1 8-12	1"	8 - 12	73,42
VS 1 13-16	1"	13 - 16	73,42



Relief valve
Vannes de sécurité - tarage fixe



Part n° Referencia	THREAD ROSCA	PRESSURE (Bar) TARAJE (BAR)	DIAMETER (mm) DIÁMETRO (mm)	€
VSN 1/8 8	1/8"	8	6 mm	20,00
VSN 1/8 10	1/8"	10	6 mm	20,00
VSN 1/8 12	1/8"	12	6 mm	20,00
VSN 1/8 15	1/8"	15	6 mm	20,00
VSN 1/4 8	1/4"	8	6 mm	20,88
VSN 1/4 10	1/4"	10	6 mm	20,88
VSN 1/4 12	1/4"	12	6 mm	20,88
VSN 1/4 15	1/4"	15	6 mm	20,88
VSN 3/8 8	3/8"	8	10 mm	29,31
VSN 3/8 10	3/8"	10	10 mm	29,31
VSN 3/8 12	3/8"	12	10 mm	29,31
VSN 3/8 15	3/8"	15	10 mm	29,31
VSN 1/2 8	1/2"	8	10 mm	36,37
VSN 1/2 10	1/2"	10	10 mm	36,37
VSN 1/2 12	1/2"	12	10 mm	36,37
VSN 1/2 15	1/2"	15	10 mm	36,37
VSN 3/4 8	3/4"	8	15 mm	97,89
VSN 3/4 10	3/4"	10	15 mm	97,89
VSN 3/4 12	3/4"	12	15 mm	97,89
VSN 3/4 15	3/4"	15	15 mm	97,89
VSN 1 8	1"	8	15 mm	122,36
VSN 1 10	1"	10	15 mm	122,36
VSN 1 12	1"	12	15 mm	122,36
VSN 1 15	1"	15	15 mm	122,36


 Coils
 Bobines

Part nº Referencia	DESCRIPTION DESCRIPCIÓN	€
C-12CC NC	Bobina 12 VDC NC	26,80
C-24CC NC	Bobina 24 VDC NC	26,80
C-220CA NC	Bobina 220 VAC NC	26,80
C-24CA NC	Bobina 24 VAC NC	26,80
C-110CA NC	Bobina 110 VAC NC	26,80
C-12CC NA	Bobina 12 VDC NA	37,51
C-24CC NA	Bobina 24 VDC NA	37,51
C-220CA NA	Bobina 220 VAC NA	37,51
C-24CA NA	Bobina 24 VAC NA	37,51
C-110CA NA	Bobina 110 VAC NA	37,51


 Connectors
 Connecteurs

Part nº Referencia	DESCRIPTION DESCRIPCIÓN	€
CONC1	Conector CC/CA para bobina mini	2,21
CONC3	Conector CC/CA para bobina grande	2,81


 Accessories
 Accessoires

Part nº Referencia	DESCRIPTION DESCRIPCIÓN	€
MEMBRANAZVCBP14	Para Z VCBP14NA/Z VCBP14NC	12,39
MEMBRANAZVCBP38	Para Z VCBP38NA/Z VCBP38NC	12,39
MEMBRANAZVCBP12	Para Z VCBP12NA/Z VCBP12NC	13,04
MEMBRANAVCBP14	Para VCBP14NA/VCBP14NC	4,96
MEMBRANAVCBP38	Para VCBP38NA/VCBP38NC	4,96
MEMBRANAVCBP12	Para VCBP12NA/VCBP12NC	5,22
MEMBRANAVCBP34	Para VCBP34NA/VCBP34NC	6,52
MEMBRANAVCBP1	Para VCBP1NA/VCBP1NC	7,82