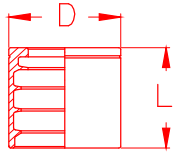




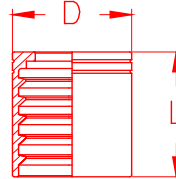
PERSKOPPELINGEN / RACCORDS A SERTIR

PF - Compact



		Slang / tuyaux		Dimens. / Afm.	
		Inch	mm	D	L
		1/4"	6	20,4	25,4
		3/8"	10	25	26,5
		1/2"	13	28,2	27,4
		3/4"	20	36,5	33,8
		1"	25	44,4	42,7

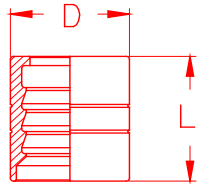
PF 2



		Slang / tuyaux		Dimens. / Afm.	
		Inch	mm	D	L
		1/4"	6	22	30,5
		5/16"	8	24	30,5
		3/8"	10	25,5	31,5
		1/2"	13	30	34
		5/8"	16	34	37
		3/4"	20	38	42,5
		1"	25	46	50

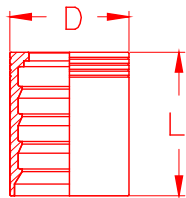
PERSKOPPELINGEN / RACCORDS A SERTIR

PF 3



		Slang / tuyaux		Dimens. / Afm.	
		Inch	mm	D	L
		1/4"	6	21	30
		5/16"	8	24	30
		3/8"	10	25,5	32
		1/2"	13	30	34
		5/8"	16	34	37
		3/4"	20	38	43
		1"	25	46	50
		1 1/4"	32	56	59
		1 1/2"	40	62	63
		2"	50	75	79

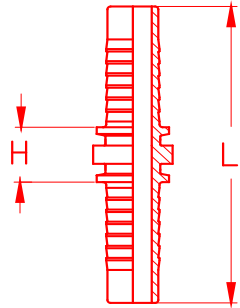
PF 4



		Slang / tuyaux		Dimens. / Afm.	
		Inch	mm	D	L
		1/4"	6	22	30
		3/8"	10	25,5	33,5
		1/2"	13	30	37
		5/8"	16	34	40
		3/4"	20	38	43
		1"	25	46	60
		1 1/4"	32	56	66
		1 1/2"	40	65	76,5

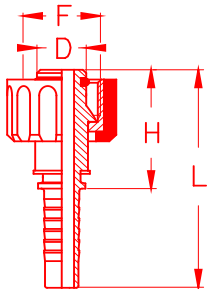
PERSKOPPELINGEN / RACCORDS A SERTIR

CP - CP



		Slang / tuyaux		Afmetingen		
		Inch	mm	H	L	D
		1/4"	6	28,5	85	4
		5/16"	8	28,5	85,5	5,5
		3/8"	10	30,5	91	7
		1/2"	13	33	99,5	9,5
		5/8"	16	36	106,5	12
		3/4"	20	41	120	14,5
		1"	25	55	152,5	20

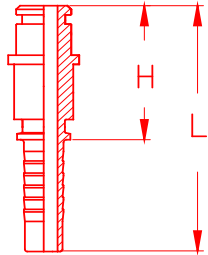
KARCHER



		Slang / tuyaux		Draad/Filet	Afmetingen		
		Inch	mm	F	H	L	D
		1/4"	6	M22 x 1,5	35,5	64	6,5
		5/16"	8	M22 x 1,5	35,5	64	6,5
		3/8"	10	M22 x 1,5	36,5	67	7

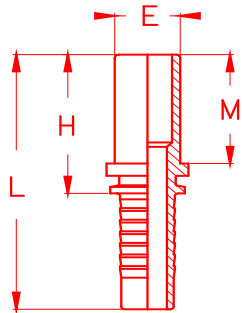
PERSKOPPELINGEN / RACCORDS A SERTIR

KARCHER - PIS



		Slang / tuyaux		Afmetingen		
		Inch	mm	D	H	L
		1/4"	6	4,5	34,5	63
		5/16"	8	5	34,5	63
		3/8"	10	6	34,5	63

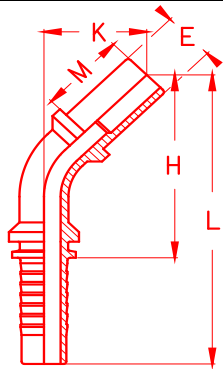
BEL



		Slang / tuyaux		Buis / Tube	Afmetingen			
		Inch	mm	E	H	L	M	D
		1/4"	6	6	31	59	23	4
		1/4"	6	8	31	59	23	5
		5/16"	8	10	33	61	25	7
		3/8"	10	10	33	63	25	7
		3/8"	10	12	33	63	25	8
		3/8"	10	15	33	63	25	11
		1/2"	13	15	34	67	25	11
		1/2"	13	18	36	69	27	14
		5/8"	16	18	36	72	27	14
		3/4"	20	22	38	79	29	18
		1"	25	28	40	95	30	23
		1 1/4"	32	35	46	107	35	30
		1 1/2"	40	42	48	119	36	36

PERSKOPPELINGEN / RACCORDS A SERTIR

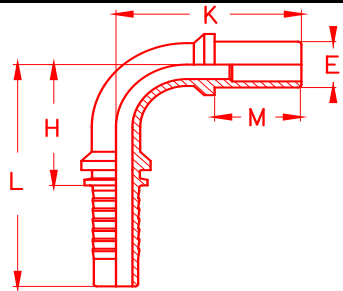
BEL 45°



		Slang / tuyaux		Buis / Tube	Afmetingen				
		Inch	mm	E	H	L	K	M	D
		1/4"	6	6	45	73	23	23	4
		1/4"	6	8	45	73	23	23	5
		5/16"	8	10	53	81	26	25	7
		3/8"	10	10	55	85	27	25	7
		3/8"	10	12	57	87	27	25	8
		3/8"	10	15	57	87	27	25	11
		1/2"	13	15	66	99	29	25	11
		1/2"	13	18	67	100	31	27	14
		5/8"	16	18	75	111	33	27	14
		5/8"	16	22	77	113	34	29	18
		3/4"	20	18	62	103	30		14
		3/4"	20	22	75	116	37	29	18
		1"	25	28	79	134	38		24
		1 1/4"	32	35	96	157	47		29
		1 1/2"	40	42	113	183	60		36

PERSKOPPELINGEN / RACCORDS A SERTIR

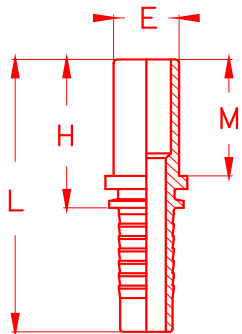
BEL 90°



		Slang / tuyaux		Buis / Tube	Afmetingen				
		Inch	mm	E	H	L	K	M	D
		1/4"	6	6	23	52	39	23	4
		1/4"	6	8	23	52	39	23	5
		5/16"	8	10	29	57,5	45	25	7
		3/8"	10	10	29	59,5	46	25	7
		3/8"	10	12	33	63,5	48	25	8
		3/8"	10	15	33	63,5	48	25	11
		1/2"	13	15	39,5	72,5	54	25	11
		1/2"	13	18	39,5	72,5	56	27	14
		5/8"	16	18	47,5	83,5	62	27	14
		5/8"	16	22	47,5	83,5	64	29	18
		3/4"	20	18	46	87	58		14
		3/4"	20	22	55,5	96,5	70	29	18
		1"	25	28	62	117	77		24
		1 1/4"	32	35	74	135	95		29
		1 1/2"	40	42	93	163	118		36

PERSKOPPELINGEN / RACCORDS A SERTIR

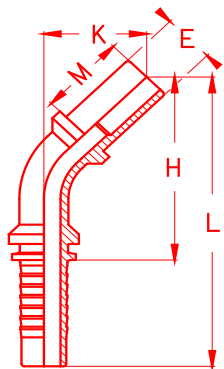
BES



			Slang / tuyaux		Buis / Tube	Afmetingen			
			Inch	mm	E	H	L	M	D
			1/4"	6	10	33	61	25	7
			1/4"	6	12	33	61	25	8
			5/16"	8	10	33	61	25	7
			5/16"	8	12	33	61	25	8
			3/8"	10	14	36	66	28	9
			1/2"	13	14	37	70	28	10
			1/2"	13	16	40	73	31	12
			5/8"	16	16	40	76	31	12
			5/8"	16	20	44	80	35	15
			3/4"	20	20	44	85	35	15
			3/4"	20	25	48	89	39	18
			1"	25	25	49	104	39	20
			1"	25	30	53	108	43	24
			1 1/4"	32	30	54	115	43	24
			1 1/4"	32	38	59	120	48	32
			1 1/2"	40	38	60	131	48	32

PERSKOPPELINGEN / RACCORDS A SERTIR

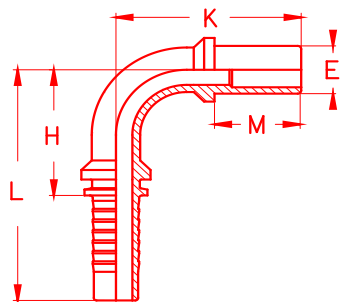
BES 45°



			Slang / tuyaux		Buis /Tube	Afmetingen			
			Inch	mm	E	H	L	K	M
			1/4"	6	10	46	75	24	25
			1/4"	6	12	47	76	25	25
			5/16"	8	12	53	81	26	25
			3/8"	10	14	59	90	29	28
			1/2"	13	14	68	101	31	28
			1/2"	13	16	70	103	34	31
			5/8"	16	20	81	117	39	35
			3/4"	20	20	79	120	41	35
			3/4"	20	25	82	123	44	39
			1"	25	25	123	178	56	39
			1"	25	30	82	123	44	39

PERSKOPPELINGEN / RACCORDS A SERTIR

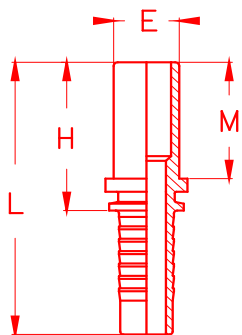
BES 90°



			Slang / tuyaux		Buis / Tube	Afmetingen				
			Inch	mm	E	H	L	K	M	D
			1/4"	6	10	23	52	41	25	7
			1/4"	6	12	23	52	41	25	8
			5/16"	8	12	29	57,5	45	25	8
			3/8"	10	14	33	63,5	51	28	10
			1/2"	13	14	39,5	72,5	57	28	10
			1/2"	13	16	39,5	72,5	60	31	12
			5/8"	16	20	47,5	83,5	70	35	15
			3/4"	20	20	55,5	96,5	76	35	15
			3/4"	20	25	55,5	96,5	80	39	18

PERSKOPPELINGEN / RACCORDS A SERTIR

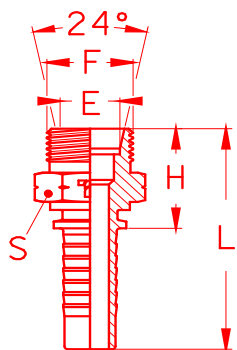
BEF



			Slang / tuyaux		Buis /Tube	Afmetingen			
			Inch	mm	E	H	L	M	D
			1/4"	6	13,25	29,5	58	22	8
			5/16"	8	13,25	29,5	58	22	8
			3/8"	10	13,25	29,5	60	22	8
			3/8"	10	16,75	31,5	62	24	11
			1/2"	13	16,75	32,5	65,5	24	11
			1/2"	13	21,25	34,5	67,5	26	15
			5/8"	16	21,25	34,5	70,5	26	15
			3/4"	20	21,25	35,3	76,3	26	15
			3/4"	20	26,75	34,3	75,3	25	20
			1"	25	33,5	37,3	92,3	27	26
			1 1/4"	32	33,5	38	99	27	26

PERSKOPPELINGEN / RACCORDS A SERTIR

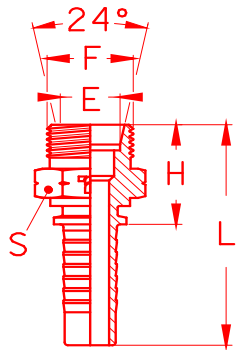
CEF



		Slang / tuyaux		Draad / filet	Afmetingen						
		Inch	mm	F	S	H	L	M	D	E	
		1/4"	6	M20 x 1,5	22	26,7	55	12	10	13	
		5/16"	8	M20 x 1,5	22	26,7	55	12	10	13	
		3/8"	10	M20 x 1,5	22	26,7	57	12	10	13	
		3/8"	10	M24 x 1,5	27	30,2	61	14	12	17	
		1/2"	13	M24 x 1,5	27	30,7	64	14	16	21	
		1/2"	13	M30 x 1,5	32	31,2	67	14	16	21	
		5/8"	16	M30 x 1,5	32	31,2	67	14	16	21	
		3/4"	20	M30 x 1,5	32	31,7	73	14	16	21	
		3/4"	20	M36 x 1,5	36	31,7	73	14	20	27	
		1"	25	M45 x 1,5	46	37,2	92	16	26	34	
		1 1/4"	32	M45 x 1,5	46	38,2	99	16	26	34	

PERSKOPPELINGEN / RACCORDS A SERTIR

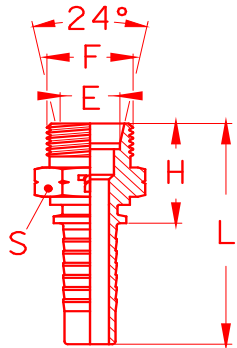
CEL



		Slang / tuyaux		Draad / filet	Afmetingen					
		Inch	mm	F	S	H	L	M	D	E
		1/4"	6	M12 x 1,5	14	23	51	10	4	6
		1/4"	6	M14 x 1,5	14	23	51	10	6	8
		1/4"	6	M16 x 1,5	17	24	53	11	8	10
		1/4"	6	M18 x 1,5	19	25	53	11	10	12
		5/16"	8	M16 x 1,5	17	24	53	11	8	10
		5/16"	8	M18 x 1,5	19	25	53	11	10	12
		3/8"	10	M16 x 1,5	17	24	55	11	8	10
		3/8"	10	M18 x 1,5	19	25	55	11	10	12
		3/8"	10	M22 x 1,5	24	27	57	12	12	15
		1/2"	13	M22 x 1,5	24	29	60	12	12	15
		1/2"	13	M26 x 1,5	27	29	62	12	15	18
		5/8"	16	M26 x 1,5	27	29	65	12	15	18
		5/8"	16	M30 x 2	32	31	67	14	19	22
		3/4"	20	M26 x 1,5	27	30	71	12	15	18
		3/4"	20	M30 x 2	32	32	73	14	19	22
		1"	25	M36 x 2	36	33	88	14	24	28
		1 1/4"	32	M45 x 2	46	38	99	16	30	35
		1 1/2"	40	M52 x 2	55	41	111	16	36	42

PERSKOPPELINGEN / RACCORDS A SERTIR

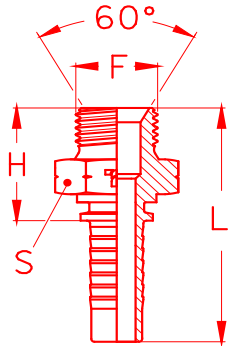
CES



			Slang / tuyaux		Draad / filet	Afmetingen					
			Inch	mm	F	S	H	L	M	D	E
			1/4"	6	M 14 x 1,5	14	25	53	12	4	6
			1/4"	6	M16 x 1,5	17	25	54	12	5	8
			1/4"	6	M18 x 1,5	19	26	54	12	7	10
			1/4"	6	M20 x 1,5	22	27	55	12	8	12
			5/16"	8	M18 x 1,5	19	26	54	12	7	10
			5/16"	8	M20 x 1,5	22	27	55	12	8	12
			3/8"	10	M18 x 1,5	19	26	56	12	7	10
			3/8"	10	M20 x 1,5	22	27	57	12	8	12
			3/8"	10	M22 x 1,5	24	29	59	14	10	14
			1/2"	13	M22 x 1,5	24	29	62	14	10	14
			1/2"	13	M24 x 1,5	27	31	64	14	12	16
			5/8"	16	M30 x 2	32	33	69	16	16	20
			3/4"	20	M30 x 2	32	34	75	16	16	20
			3/4"	20	M36 x 2	36	36	77	18	20	25
			1"	25	M36 x 2	36	37	92	18	20	25
			1"	25	M42 x 2	46	41	96	20	25	30
			1 1/4"	32	M42 x 2	46	42	103	20	26	30
			1 1/4"	32	M52 x 2	55	46	107	22	32	38
			1 1/2"	40	M52 x 2	55	47	117	22	32	38

PERSKOPPELINGEN / RACCORDS A SERTIR

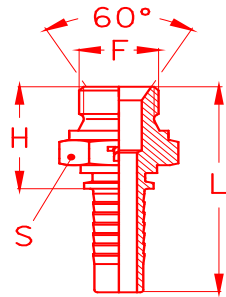
AGM



			Slang / tuyaux		Draad / filet	Afmetingen				
			Inch	mm	F	S	H	L	G	D
			1/4"	6	M12 x 1,5	17	26	54	12	5
			1/4"	6	M14 x 1,5	19	26	54	12	6
			1/4"	6	M16 x 1,5	22	26	54	12	8
			1/4"	6	M18 x 1,5	24	27	55	12	10
			5/16"	8	M14 x 1,5	19	26	54	12	6
			5/16"	8	M16 x 1,5	22	26	54	12	8
			5/16"	8	M18 x 1,5	24	27	55	12	10
			3/8"	10	M14 x 1,5	19	26	56	12	6
			3/8"	10	M16 x 1,5	22	26	56	12	8
			3/8"	10	M18 x 1,5	24	27	57	12	10
			3/8"	10	M20 x 1,5	25	29	59	14	12
			3/8"	10	M22 x 1,5	27	29	59	14	13
			1/2"	13	M18 x 1,5	24	27	60	12	10
			1/2"	13	M20 x 1,5	25	29	62	14	12
			1/2"	13	M22 x 1,5	27	29	62	14	13
			1/2"	13	M24 x 1,5	32	30	63	14	14
			1/2"	13	M26 x 1,5	32	33	66	16	16
			5/8"	16	M24 x 1,5	32	30	66	14	14
			5/8"	16	M26 x 1,5	32	32	68	16	16
			3/4"	20	M26 x 1,5	32	33	74	16	16
			3/4"	20	M30 x 1,5	36	34	75	16	20
			1"	25	M38 x 1,5	46	37	92	16	26
			1 1/4"	32	M45 x 1,5	55	38	99	16	33

PERSKOPPELINGEN / RACCORDS A SERTIR

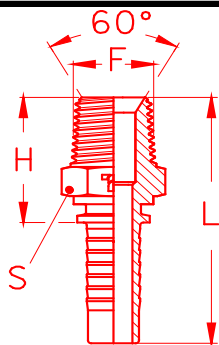
AGR



			Slang / tuyaux		Draad / filet	Afmetingen				
			Inch	mm	F	S	H	L	G	D
			1/4"	6	1/8" - 28	14	21	49	8	4
			1/4"	6	1/4" - 19	19	25	53	11	6
			1/4"	6	3/8" - 19	22	28	56	13	9,5
			1/4"	6	1/2" - 14	27	31	60	15	12
			5/16"	8	1/4" - 19	19	25	53	11	6
			5/16"	8	3/8" - 19	22	27	56	13	9,5
			5/16"	8	1/2" - 14	27	31	60	15	12
			3/8"	10	1/4" - 19	19	25	55	11	7
			3/8"	10	3/8" - 19	22	27	58	13	9
			3/8"	10	1/2" - 14	27	31	62	15	12
			1/2"	13	3/8" - 19	22	28	61	13	9,5
			1/2"	13	1/2" - 14	27	32	65	15	12
			1/2"	13	5/8" - 14	30	33	66	16	14
			1/2"	13	3/4" - 14	32	34	67	17	16
			5/8"	16	1/2" - 14	27	32	68	15	12
			5/8"	16	5/8" - 14	30	33	69	16	14
			5/8"	16	3/4" - 14	32	34	70	17	16
			3/4"	20	1/2" - 14	27	33	74	15	12
			3/4"	20	5/8" - 14	30	34	75	16	15
			3/4"	20	3/4" - 14	32	35	76	17	16
			3/4"	20	1" - 11	41	39	80	19	22
			1"	25	3/4" - 14	32	40,5	96		
			1"	25	1" - 11	41	40	95	19	22
			1"	25	1 1/4" - 11	50	44	99	22	30
			1 1/4"	32	1 1/4" - 11	50	45	106	22	30
			1 1/4"	32	1 1/2" - 11	55	45	106	22	35
			1 1/2"	40	1 1/2" - 11	55	46	116	22	35

PERSKOPPELINGEN / RACCORDS A SERTIR

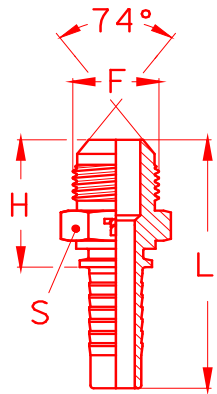
AGN



			Slang / tuyaux		Draad / filet	Afmetingen				
			Inch	mm	F	S	H	L	M	D
			1/4"	6	1/8" - 27	12	22	51	10	4
			1/4"	6	1/4" - 18	15	28	56	14	5,5
			1/4"	6	3/8" - 18	19	28	57	14	8,5
			5/16"	8	1/4" - 18	15	28	56	14	5,5
			5/16"	8	3/8" - 18	19	28	56	14	8,5
			5/16"	8	1/2" - 14	22	34	64	19	11
			3/8"	10	1/4" - 18	15	28	58	14	7
			3/8"	10	3/8" - 18	19	28	58	14	8,5
			3/8"	10	1/2" - 14	22	34	64	19	11
			1/2"	13	3/8" - 18	19	28	61	14	9,5
			1/2"	13	1/2" - 14	22	34	67	19	11
			1/2"	13	3/4" - 14	27	36	69	19	16
			5/8"	16	1/2" - 14	22	34	70	19	12
			5/8"	16	3/4" - 14	27	36	72	19	16
			3/4"	20	3/4" - 14	27	37	78	19	16
			3/4"	20	1" - 11 1/2	36	42	83	24	21
			1"	25	3/4" - 14	32	38	93	19	16
			1"	25	1" - 11 1/2	36	43	98	24	21
			1"	25	1 1/4" - 11 1/2	46	46	101	25	28
			1 1/4"	32	1" 11 1/2	40	44	106	24	21
			1 1/4"	32	1 1/4" - 11 1/2	46	47	108	25	28

PERSKOPPELINGEN / RACCORDS A SERTIR

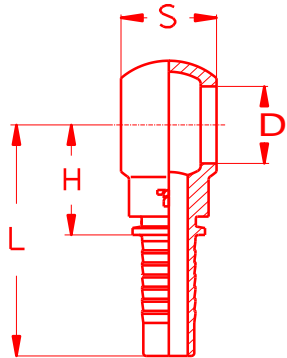
AGJ



			Slang / tuyaux		Draad / filet	Afmetingen				
			Inch	mm	F	S	H	L	M	D
			1/4"	6	7/16" -20	12	26,5	55	14	4,5
			1/4"	6	1/2" -20	14	26,5	55	14	6
			1/4"	6	9/16" - 18	15	27,5	56	14	7
			5/16"	8	7/16" - 20	14	26,5	55	14	6
			5/16"	8	1/2" - 20	14	27	56	14	6
			5/16"	8	9/16" - 18	15	28	58	16	7
			5/16"	8	5/8" - 18	17	29	59	17	7
			5/16"	8	3/4" - 16	19	30	58	17	9,5
			3/8"	10	9/16" -18	15	28	58	14	7
			3/8"	10	5/8" - 18	17	29	60	16	7
			3/8"	10	3/4" - 16	19	30	61	17	9,6
			3/8"	10	7/8" - 14	24	34	65	19	13
			1/2"	13	3/4" - 16	19	31	64	17	9,5
			1/2"	13	7/8" - 14	24	35	68	19	12
			1/2"	13	1 1/16" - 12	27	39	72	22	16
			5/8"	16	7/8" - 14	24	35	71	19	13
			5/8"	16	1 1/16" - 12	27	39	75	22	16
			3/4"	20	1 1/16" - 12	27	40	81	22	16
			3/4"	20	1 3/16" -12	32	41	82	23	18
			3/4"	20	1 5/16" - 12	34	42	83	23	22
			1"	25	1 1/16" - 12	32	41	96	23	16
			1"	25	1 3/16" - 12	32	42	97	23	18
			1"	25	1 5/16" - 12	34	43	98	23	22
			1"	25	1 5/8" - 12	42	46	101	24	28
			1 1/4"	32	1 5/8" - 12	42	47	108	24	28

PERSKOPPELINGEN / RACCORDS A SERTIR

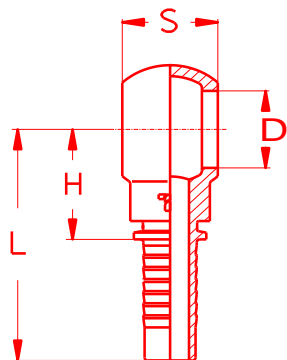
RN-M



			Slang / tuyaux		Bout / Boulon	Afmetingen			
			Inch	mm	Draad / Filet	H	L	S	D
			1/4"	6	M12 x 1,5	22,5	51	12	12
			1/4"	6	M14 x 1,5	24,5	53	14	14
			1/4"	6	M16 x 1,5	26,5	55	17	16
			1/4"	6	M18 x 1,5	28,5	57	20	18
			5/16"	8	M14 x 1,5	24,5	53	14	14
			5/16"	8	M16 x 1,5	26,5	55	17	16
			5/16"	8	M18 x 1,5	28,5	57	20	18
			3/8"	10	M14 x 1,5	24,5	55	16	14
			3/8"	10	M16 x 1,5	26,5	57	17	16
			3/8"	10	M18 x 1,5	28,5	59	20	18
			3/8"	10	M20 x 1,5	29,5	60	22	20
			3/8"	10	M22 x 1,5	31,5	62	22	22
			1/2"	13	M18 x 1,5	29	62	20	18
			1/2"	13	M20 x 1,5	30	63	22	20
			1/2"	13	M22 x 1,5	32	65	22	22
			5/8"	16	M22 x 1,5	32	68	24	22

PERSKOPPELINGEN / RACCORDS A SERTIR

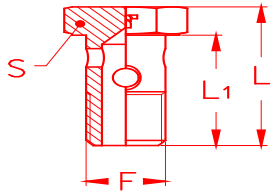
RN-G



			Slang / tuyaux		Bout / Boulon	Afmetingen			
			Inch	mm	Draad / Filet	H	L	S	D
			1/4"	6	1/8" GAS	22,5	51	10	10
			1/4"	6	1/4" GAS	24,5	53	14	13
			1/4"	6	3/8" GAS	26,5	55	16	17
			1/4"	6	1/2" GAS	29	58	22	21
			5/16"	8	1/4" GAS	24,5	53	14	13
			5/16"	8	3/8" GAS	26,5	55	16	17
			5/16"	8	1/2" GAS	29	58	22	21
			3/8"	10	1/4" GAS	24,5	55	14	13
			3/8"	10	3/8" GAS	26,5	57	16	17
			3/8"	10	1/2" GAS	29,5	60	22	21
			1/2"	13	3/8" GAS	27,5	60	16	17
			1/2"	13	1/2" GAS	30	63	22	21
			1/2"	13	5/8" GAS	30	63	24	23
			5/8"	16	5/8" GAS	30	66	24	23

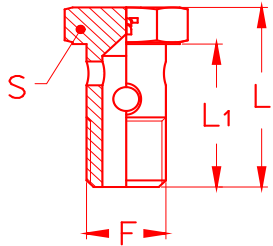
PERSKOPPELINGEN / RACCORDS A SERTIR

BANJO bout / Boulon



				Draad / Filet	Afmetingen		
				F	L	L1	S
				M12 x 1,5	31	25,5	17
				M14 x 1,5	37,5	30,5	19
				M16 x 1,5	40	32,5	22
				M18 x 1,5	44	36,5	24
				M20 x 1,5	48	39,5	27
				M22 x 1,5	50	41,5	28

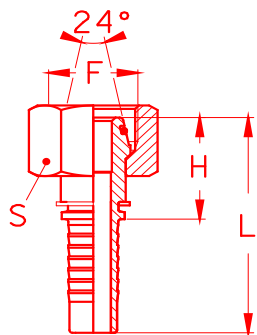
BANJO bout / Boulon



				Draad / Filet	Afmetingen		
				F	L	L1	S
				1/4" - 19	37,5	30	19
				3/8" - 19	40	32	22
				1/2" - 14	48	39	27
				5/8" - 14	55	45,5	30
				3/4" - 14	58	48	32
				1" - 11	71	58	40

PERSKOPPELINGEN / RACCORDS A SERTIR

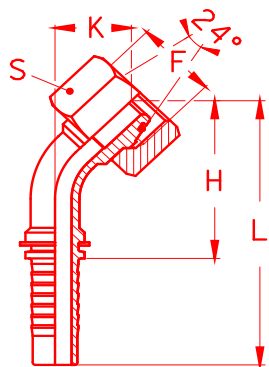
DKOL



			Slang / tuyaux		Draad / filet	Afmetingen			
			Inch	mm	F	S	H	L	D
			1/4"	6	M12 x 1,5	17	20,5	49	4
			1/4"	6	M14 x 1,5	17	26	55	4
			1/4"	6	M16 x 1,5	19	26,5	55	5,5
			1/4"	6	M18 x 1,5	22	26,5	55	7
			5/16"	8	M16 x 1,5	19	26,5	55	5,5
			5/16"	8	M18 x 1,5	22	26,5	55	7
			3/8"	10	M16 x 1,5	19	23	54	7
			3/8"	10	M18 x 1,5	22	26,5	57	7
			3/8"	10	M22 x 1,5	27	27	58	10
			1/2"	13	M22 x 1,5	27	27,5	61	10
			1/2"	13	M26 x 1,5	32	28	61	12
			5/8"	16	M26 x 1,5	32	28	64	12
			5/8"	16	M30 x 2	36	35	67	16
			3/4"	20	M26 x 1,5	32	28,5	70	13
			3/4"	20	M30 x 2	36	31	72	16
			1"	25	M36 x 2	41	32,5	88	22
			1 1/4"	32	M45 x 2	50	37	98	26
			1 1/2"	40	M52 x 2	60	38,5	109	33

PERSKOPPELINGEN / RACCORDS A SERTIR

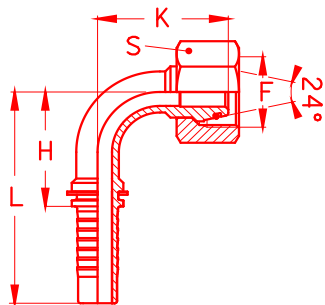
DKOL 45°



			Slang / tuyaux		Draad / filet	Afmetingen				
			Inch	mm	F	S	H	L	K	D
			1/4"	6	M12 x 1,5	17	38	67	16	4
			1/4"	6	M14 x 1,5	17	38	67	16	4
			1/4"	6	M16 x 1,5	19	38	66	17	5,5
			1/4"	6	M18 x 1,5	22	40	69	18	7
			5/16"	8	M16 x 1,5	19	44	73	17	5,5
			5/16"	8	M18 x 1,5	22	46	75	19	7
			3/8"	10	M16 x 1,5	19	53	84	22	7
			3/8"	10	M18 x 1,5	22	47	78	18	7
			3/8"	10	M22 x 1,5	27	49	80	20	10
			1/2"	13	M22 x 1,5	27	56	89	20	10
			1/2"	13	M26 x 1,5	32	57	90	21	12
			5/8"	16	M26 x 1,5	32	67	103	24	12
			5/8"	16	M30 x 2	36	69	105	26	16
			3/4"	20	M26 x 1,5	32	68	109	30	13
			3/4"	20	M30 x 2	36	65	106	26	16
			1"	25	M36 x 2	41	81	136	32	22
			1 1/4"	32	M45 x 2	50	99	160	40	26
			1 1/2"	40	M52 x 2	60	115	185	43	33

PERSKOPPELINGEN / RACCORDS A SERTIR

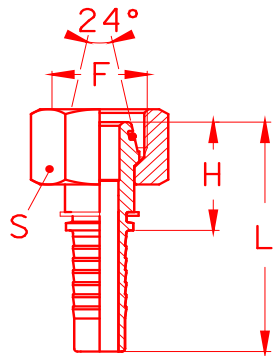
DKOL 90°



			Slang / tuyaux		Draad / filet	Afmetingen				
			Inch	mm	F	S	H	L	K	D
			1/4"	6	M12 x 1,5	17	22	53	28	4
			1/4"	6	M14 x 1,5	17	24	53	28	4
			1/4"	6	M16 x 1,5	19	24	53	30	5,5
			1/4"	6	M18 x 1,5	22	24	53	31	7
			5/16"	8	M16 x 1,5	19	30,5	59	33	5,5
			5/16"	8	M18 x 1,5	22	30,5	59	34	7
			3/8"	10	M16 x 1,5	19	33	64	34	7
			3/8"	10	M18 x 1,5	22	33	64	35	7
			3/8"	10	M22 x 1,5	27	33	64	38	10
			1/2"	13	M22 x 1,5	27	40	73	41	10
			1/2"	13	M26 x 1,5	32	40	73	43	12
			5/8"	16	M26 x 1,5	32	48,5	85	49	12
			5/8"	16	M30 x 2	36	48,5	85	50	16
			3/4"	20	M26 x 1,5	32	49	85	52	13
			3/4"	20	M30 x 2	36	56,5	98	54	16
			1"	25	M36 x 2	41	73	128	68	22
			1 1/4"	32	M45 x 2	50	88	149	86	26
			1 1/2"	40	M52 x 2	60	106	176	96	33

PERSKOPPELINGEN / RACCORDS A SERTIR

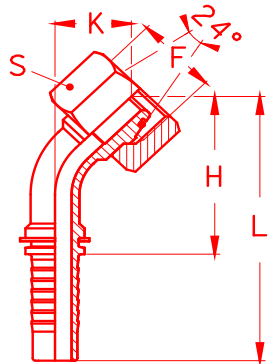
DKOS



			Slang / tuyaux		Draad / filet	Afmetingen			
			Inch	mm	F	S	H	L	D
			1/4"	6	M14 x 1,5	17	20,5	49	4
			1/4"	6	M16 x 1,5	19	26	55	4
			1/4"	6	M18 x 1,5	22	26,5	55	5,5
			1/4"	6	M20 x 1,5	24	26,5	55	7
			5/16"	8	M18 x 1,5	22	26,5	55	5,5
			5/16"	8	M20 x 1,5	24	26,5	55	7
			3/8"	10	M18 x 1,5	22	22,5	54	7
			3/8"	10	M20 x 1,5	24	26,5	57	7
			3/8"	10	M22 x 1,5	27	30	61	9
			1/2"	13	M22 x 1,5	27	32	65	9,5
			1/2"	13	M24 x 1,5	30	30,5	64	10
			5/8"	16	M30 x 2	36	35	71	13
			3/4"	20	M30 x 2	36	35	76	15
			3/4"	20	M36 x 2	46	38,5	80	15
			1"	25	M36 x 2	46	39,5	95	20
			1"	25	M42 x 2	50	41	96	21
			1 1/4"	32	M42 x 2	50	42	103	25
			1 1/4"	32	M52 x 2	60	46,5	108	27
			1 1/2"	40	M52 x 2	60	48	119	30

PERSKOPPELINGEN / RACCORDS A SERTIR

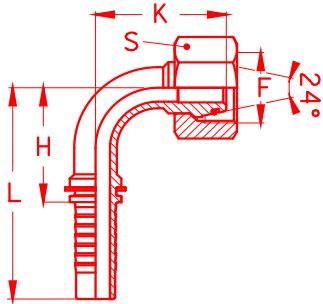
DKOS 45°



			Slang / tuyaux		Draad / filet	Afmetingen				
			Inch	mm	F	S	H	L	K	D
			1/4"	6	M14 x 1,5	17	38	67	16	4
			1/4"	6	M16 x 1,5	19	38	67	16	4
			1/4"	6	M18 x 1,5	22	38	66	17	5,5
			1/4"	6	M20 x 1,5	24	40	69	18	7
			5/16"	8	M18 x 1,5	22	44	73	17	5,5
			5/16"	8	M20 x 1,5	24	46	75	19	7
			3/8"	10	M18 x 1,5	22	53	84	22	7
			3/8"	10	M20 x 1,5	24	47	78	18	7
			3/8"	10	M22 x 1,5	27	49	80	20	9
			1/2"	13	M22 x 1,5	27	57	90	21	9,5
			1/2"	13	M24 x 1,5	30	57	92	21	10
			5/8"	16	M30 x 2	36	70	106	27	13
			3/4"	20	M30 x 2	36	68	109	29	15
			3/4"	20	M36 x 2	46	68	109	29	15
			1"	25	M36 x 2	46	82	137	33	20
			1"	25	M42 x 2	50	82	137	33	21
			1 1/4"	32	M42 x 2	50	99	160	40	25
			1 1/4"	32	M52 x 2	60	99	160	40	27
			1 1/2"	40	M52 x 2	60	115	185	43	30

PERSKOPPELINGEN / RACCORDS A SERTIR

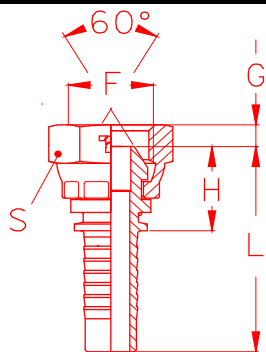
DKOS 90°



			Slang / tuyaux		Draad / filet	Afmetingen				
			Inch	mm	F	S	H	L	K	D
			1/4"	6	M14 x 1,5	17	24	52	28	4
			1/4"	6	M16 x 1,5	19	24	53	28	4
			1/4"	6	M18 x 1,5	22	24	53	30	5,5
			1/4"	6	M20 x 1,5	24	24	53	31	7
			5/16"	8	M18 x 1,5	22	30,5	59	33	5,5
			5/16"	8	M20 x 1,5	24	30,5	59	34	7
			3/8"	10	M18 x 1,5	22	30,5	64	35	7
			3/8"	10	M20 x 1,5	24	33	64	35	7
			3/8"	10	M22 x 1,5	27	33	64	37	9
			1/2"	13	M22 x 1,5	27	40	73	43	9,5
			1/2"	13	M24 x 1,5	30	40	73	42	10
			5/8"	16	M30 x 2	36	48,5	85	53	13
			3/4"	20	M30 x 2	36	56,5	98	59	15
			3/4"	20	M36 x 2	46	56,5	98	59	15
			1"	25	M36 x 2	46	73	128	71	20
			1"	25	M42 x 2	50	73	128	71	21
			1 1/4"	32	M42 x 2	50	88	149	86	25
			1 1/4"	32	M52 x 2	60	88	149	86	27
			1 1/2"	40	M52 x 2	60	106	176	96	30

PERSKOPPELINGEN / RACCORDS A SERTIR

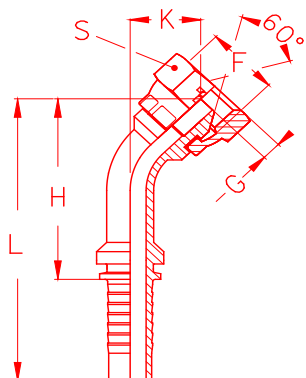
DKR



			Slang / tuyaux		Draad / filet	Afmetingen				
			Inch	mm	F	S	H	L	G	D
			1/4"	6	1/8" - 28	15	18	47	3	4
			1/4"	6	1/4" - 19	19	18	47	5	5
			1/4"	6	3/8" - 19	22	20	48	7	7,5
			1/4"	6	1/2" - 14	27	22	50	7	10
			5/16"	8	1/4" - 19	19	18	47	5	5,5
			5/16"	8	3/8" - 19	22	20	48	7	7,5
			5/16"	8	1/2" - 14	27	22	50	7	10
			3/8"	10	1/4" - 19	19	18	48	5	5
			3/8"	10	3/8" - 19	22	20	50	7	7,5
			3/8"	10	1/2" - 14	27	22	52	7	10
			1/2"	13	3/8" - 19	22	21	54	7	7,5
			1/2"	13	1/2" - 14	27	23	56	7	10
			1/2"	13	5/8" - 14	30	23	56	9	13
			1/2"	13	3/4" - 14	32	25	58	9	15
			5/8"	16	1/2" - 14	27	23	59	7	10
			5/8"	16	5/8" - 14	30	23	59	9	13
			5/8"	16	3/4" - 14	32	25	61	9	15
			3/4"	20	1/2" - 14	27	23,7	65	6,5	13
			3/4"	20	5/8" - 14	30	24	65	9	13
			3/4"	20	3/4" - 14	32	26	67	9	15
			3/4"	20	1" - 11	41	26	67	10	21
			1"	25	3/4" - 14	50	33,9	89	10	21
			1"	25	1" - 11	41	27	82	10	21
			1"	25	1 1/4" - 11	50	30	85	11	27
			1 1/4"	32	1 1/4" - 11	50	30	91	11	27
			1 1/4"	32	1 1/2" - 11	55	34	95	11	33
			1 1/2"	40	1 1/2" - 11	55	35	106	11	33

PERSKOPPELINGEN / RACCORDS A SERTIR

DKR - 45°

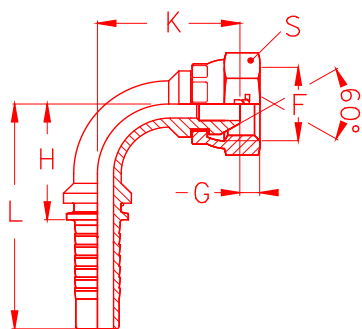


			Slang / tuyaux		Draad / filet	Afmetingen					
			Inch	mm	F	S	H	L	K	G	D
			1/4"	6	1/8" - 28	14	39	68	15	4,3	
			1/4"	6	1/4" - 19	19	36	65	14	5	5
			1/4"	6	3/8" - 19	22	37,5	66	16	7	7,5
			1/4"	6	1/2" - 14	27	45	74	21	6,5	
			5/16"	8	1/4" - 19	19	48	77	18	5,1	
			5/16"	8	3/8" - 19	22	44	73	17	7	7,5
			5/16"	8	1/2" - 14	27	52	81	22	6,5	
			3/8"	10	1/4" - 19	19	53	84	19	4,1	
			3/8"	10	3/8" - 19	22	48	79	18	7	7,5
			3/8"	10	1/2" - 14	27	49,5	80	20	7	10
			1/2"	13	3/8" - 19	22	62,5	96	23	5,8	
			1/2"	13	1/2" - 14	27	58,5	92	22	7	10
			1/2"	13	5/8" - 14	30	58,5	92	22	9	13
			1/2"	13	3/4" - 14	32	67,5	101	28	8,6	
			5/8"	16	1/2" - 14	27	78,5	115	26	6,5	
			5/8"	16	5/8" - 14	30	66,5	103	24	9	13
			5/8"	16	3/4" - 14	32	68	104	26	9	15
			3/4"	20	1/2" - 14	27	86,5	128	33	6,5	
			3/4"	20	5/8" - 14	30	86,5	128	33	9,3	
			3/4"	20	3/4" - 14	32	66	106	28	9	15
			3/4"	20	1" - 11	41	69,5	111	32	10	21
			1"	25	3/4" - 14	32	109	164	40	8,6	
			1"	25	1" - 11	41	81,5	137	33	10	21
			1"	25	1 1/4" - 11	50	85,5	141	37	11	27
			1 1/4"	32	1 1/4" - 11	50	99,5	161	40	11	27
			1 1/4"	32	1 1/2" - 11	55	105	166	46	10	33
			1 1/2"	40	1 1/2" - 11	55	117	187	47	10	33

		1 1/2"	40	2" - 11	70	122	193	52	15	44
		2"	50	2" - 11	70	148	224	56	15	44

PERSKOPPELINGEN / RACCORDS A SERTIR

DKR - 90°

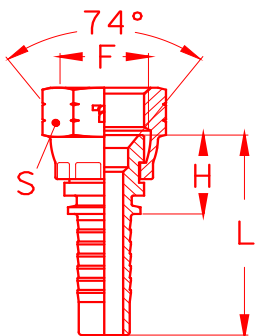


			Slang / tuyaux		Draad / filet	Afmetingen					
			Inch	mm	F	S	H	L	K	G	D
			1/4"	6	1/8" - 28	14	24	52	26	4,3	5
			1/4"	6	1/4" - 19	19	23	52	26	5	5
			1/4"	6	3/8" - 19	22	23	52	28	7	7,5
			1/4"	6	1/2" - 14	27	24	52	35	6,5	
			5/16"	8	1/4" - 19	19	31	59	32	4,1	
			5/16"	8	3/8" - 19	22	29	58	33	7	7,5
			5/16"	8	1/2" - 14	27	31	59	38	6,5	
			3/8"	10	1/4" - 19	19	34	64	36	4,1	
			3/8"	10	3/8" - 19	22	33	64	33	7	7,5
			3/8"	10	1/2" - 14	27	33	64	38	7	10
			1/2"	13	3/8" - 19	22	41	74	42	5,8	
			1/2"	13	1/2" - 14	27	39,5	73	43	7	10
			1/2"	13	5/8" - 14	30	39,5	73	43	9	13
			1/2"	13	3/4" - 14	32	41	74	50	8,6	
			5/8"	16	1/2" - 14	27	49	85	51	6,5	
			5/8"	16	5/8" - 14	30	47,5	84	49	9	13
			5/8"	16	3/4" - 14	32	47,5	83	51	9	15
			3/4"	20	1/2" - 14	27	58	99	58	6,5	
			3/4"	20	5/8" - 14	30	58	99	58	9,3	
			3/4"	20	3/4" - 14	32	55,5	97	57	9	15
			3/4"	20	1" - 11	41	55,5	97	62	10	21
			1"	25	3/4" - 14	32	74	129	71	8,6	
			1"	25	1" - 11	41	72,5	128	69	10	21
			1"	25	1 1/4" - 11	50	72,5	128	75	11	27
			1 1/4"	32	1 1/4" - 11	50	89,5	151	85	11	27
			1 1/4"	32	1 1/2" - 11	55	89,5	151	93	10	33
			1 1/2"	40	1 1/2" - 11	55	105	176	100	10	33

			1 1/2"	40	2" - 11	70	105	176	108	15	44
			2"	50	2" - 11	70	137	213	125	15	44

PERSKOPPELINGEN / RACCORDS A SERTIR

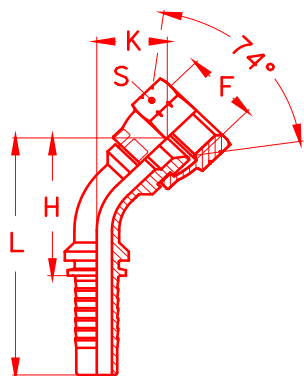
DKJ



			Slang / tuyaux		Draad / filet	Afmetingen				
			Inch	mm	F	S	H	L	G	D
			1/4"	6	7/16" -20	15	14,5	43	9	4
			1/4"	6	1/2" -20	17	16,5	45	9,5	5,5
			1/4"	6	9/16" - 18	19	16,5	45	10	7
			5/16"	8	7/16" - 20	15	16,5	45	9,5	4
			5/16"	8	1/2" - 20	17	16,5	45	10	5,5
			5/16"	8	9/16" - 18	19	16,5	45	11	7
			5/16"	8	5/8" - 18	22	19	47	11	7,5
			5/16"	8	3/4" - 16	24	19	48	10	10
			3/8"	10	9/16" -18	19	16,5	47	11	7
			3/8"	10	5/8" - 18	22	18	49	11	7,5
			3/8"	10	3/4" - 16	24	19	49	13	10
			1/2"	13	3/4" - 16	24	20	53	11	10
			1/2"	13	7/8" - 14	27	21,5	55	13	12
			1/2"	13	1 1/16" - 12	32	23	56	15	15
			5/8"	16	7/8" - 14	27	21,5	58	13	12
			5/8"	16	1 1/16" - 12	32	23	59	15	15
			3/4"	20	7/8" - 14	27	22,3	63	13	12
			3/4"	20	1 1/16" - 12	32	24	65	15	15
			3/4"	20	1 3/16" -12	36	24,5	66	15	18
			3/4"	20	1 5/16" - 12	41	25	66	16	21
			1"	25	1 1/16" - 12	36	25,5	81	15	15
			1"	25	1 5/16" - 12	41	26	81	16	21

PERSKOPPELINGEN / RACCORDS A SERTIR

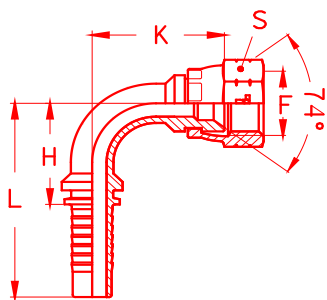
DKJ 45°



			Slang / tuyaux		Draad / filet	Afmetingen					
			Inch	mm	F	S	H	L	K	G	D
			1/4"	6	7/16" -20	15	34	62	12	9	4
			1/4"	6	1/2" -20	17	35	64	13	9,5	5,5
			1/4"	6	9/16" - 18	19	35	64	13	10	7
			5/16"	8	1/2" - 20	17	42	70	15	9,5	5,5
			5/16"	8	9/16" - 18	19	42	70	15	10	7
			5/16"	8	5/8" - 18	22	43	71	16	11	7,5
			3/8"	10	9/16" -18	19	43	74	15	10	7
			3/8"	10	3/4" - 16	24	47	78	18	11	10
			3/8"	10	7/8" - 14	27	56	86	22	13	12
			1/2"	13	3/4" - 16	24	52	89	20	11	10
			1/2"	13	7/8" - 14	27	57	90	21	13	12
			1/2"	13	1 1/16" - 12	32	65,5	99	26	15	15
			5/8"	16	7/8" - 14	27	66	102	23	13	12
			5/8"	16	1 1/16" - 12	32	67	103	24	15	15
			3/4"	20	7/8" - 14	27	85	127	32	13	12
			3/4"	20	1 1/16" - 12	32	64	105	27	15	15
			3/4"	20	1 3/16" -12	36	66	107	29	15	18
			3/4"	20	1 5/16" - 12	41	67	108	29	16	21
			1"	25	1 1/16" - 12	32	107	162	39	15	15
			1"	25	1 5/16" - 12	41	81	136	32	16	21
			1"	25	1 5/8" - 12	50	84	139	35	16	28
			1 1/4"	32	1 5/8" - 12	50	98	160	38	16	28
			1 1/4"	32	1 7/8" - 12	55	103	164	43	19	32
			1 1/2"	40	1 7/8" - 12	55	114	185	44	19	32
			2"	50	2 1/2" - 12	70	146	222	54	26	44

PERSKOPPELINGEN / RACCORDS A SERTIR

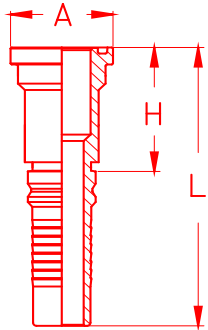
DKJ 90°



			Slang / tuyaux		Draad / filet	Afmetingen					
			Inch	mm	F	S	H	L	K	G	D
			1/4"	6	7/16" -20	15	23	52	23	9	4
			1/4"	6	1/2" -20	17	23	52	25	9,5	5,5
			1/4"	6	9/16" - 18	19	23	52	25	10	7
			5/16"	8	1/2" - 20	17	29	58	29	9,5	5,5
			5/16"	8	9/16" - 18	19	29	58	29	10	7
			5/16"	8	5/8" - 18	22	29	58	31	11	7,5
			3/8"	10	9/16" -18	19	29	60	30	10	7
			3/8"	10	3/4" - 16	24	33	64	35	11	10
			3/8"	10	7/8" - 14	27	34	64	39	13	12
			1/2"	13	3/4" - 16	24	40	73	40	11	10
			1/2"	13	7/8" - 14	27	40	73	42	13	12
			1/2"	13	1 1/16" - 12	32	41	74	48	15	15
			5/8"	16	7/8" - 14	27	48	84	48	13	12
			5/8"	16	1 1/16" - 12	32	48	84	49	15	15
			3/4"	20	7/8" - 14	27	58	99	56	13	12
			3/4"	20	1 1/16" - 12	32	56	97	55	15	15
			3/4"	20	1 3/16" -12	36	56	97	58	15	18
			3/4"	20	1 5/16" - 12	40	56	97	59	16	21
			1"	25	1 1/16" - 12	32	74	129	69	15	15
			1"	25	1 5/16" - 12	40	73	128	68	16	21

PERSKOPPELINGEN / RACCORDS A SERTIR

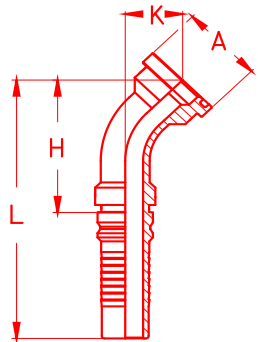
SFL-3



			Slang / tuyaux		Flens/flasque	Afmetingen			
			Inch	mm		H	L	D	A
			1/2"	13	1/2"	48,5	81,5	12	30
			1/2"	13	3/4"	52,5	85,5	14	38
			5/8"	16	1/2"	46,5	82,5		30
			5/8"	16	3/4"	52,5	88,5		38
			3/4"	20	1/2"	36	77		30
			3/4"	20	3/4"	53,5	94,5	19	38
			3/4"	20	1"	59,5	101	25	45
			1"	25	3/4"	61	116		38
			1"	25	1"	60,5	116	25	45
			1"	25	1 1/4"	65	120	32	51
			1 1/4"	32	1"	61	122		45
			1 1/4"	32	1 1/4"	65,5	127	32	51
			1 1/4"	32	1 1/2"	70	130	38	60
			1 1/2"	40	1 1/2"	70,5	141	38	60
			1 1/2"	40	2"	77,5	148	36	71
			2"	50	2"	77	153		71
			2"	50	2 1/2"	77	153	50	71

PERSKOPPELINGEN / RACCORDS A SERTIR

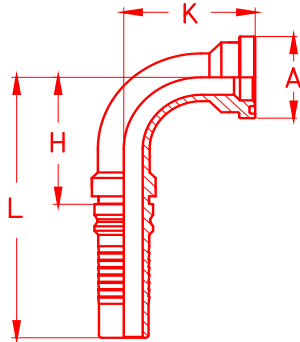
SFL-3 - 45°



			Slang / tuyaux		Flens/flasque	Afmetingen				
			Inch	mm		H	L	K	D	A
			1/2"	13	1/2"	56,5	89,5	20	12	30
			1/2"	13	3/4"	60	93	24	19	38
			5/8"	16	1/2"	70	103	23		30
			5/8"	16	3/4"	77	116	27		38
			3/4"	20	1/2"	84	125	31		30
			3/4"	20	3/4"	63	104	26	19	38
			3/4"	20	1"	65	106	28	25	45
			1"	25	3/4"	103	158	35		38
			1"	25	1"	80,5	136	32	25	45
			1"	25	1 1/4"	81,5	137	33	32	51
			1 1/4"	32	1"	130	191	47		45
			1 1/4"	32	1 1/4"	98,5	160	39	32	51
			1 1/4"	32	1 1/2"	99	160	39	38	60
			1 1/2"	40	1 1/2"	116	186	45	38	60
			1 1/2"	40	2"	118	188	47	50	71
			2"	50	2"	152	228	60	50	71

PERSKOPPELINGEN / RACCORDS A SERTIR

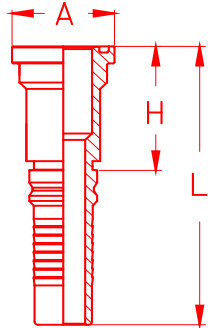
SFL-3 - 90°



			Slang / tuyaux		Flens/flasque	Afmetingen				
			Inch	mm		H	L	K	D	A
			1/2"	13	1/2"	39,5	72,5	41	12	30
			1/2"	13	3/4"	39,5	72,5	46	19	38
			5/8"	16	1/2"	49	85	46		30
			5/8"	16	3/4"	49	85	52		38
			3/4"	20	1/2"	58	99	51		30
			3/4"	20	3/4"	55,5	96,5	54	19	38
			3/4"	20	1"	55,5	96,5	57	25	45
			1"	25	3/4"	74	129	69		38
			1"	25	1"	72,5	128	68	25	45
			1"	25	1 1/4"	72,5	128	70	32	51
			1 1/4"	32	1"	92	153	78		45
			1 1/4"	32	1 1/4"	89,5	151	84	32	51
			1 1/4"	32	1 1/2"	89,5	151	84	38	60
			1 1/2"	40	1 1/2"	105	175	98	38	60
			1 1/2"	40	2"	105	175	101	50	71
			2"	50	2"	137	213	130	50	71

PERSKOPPELINGEN / RACCORDS A SERTIR

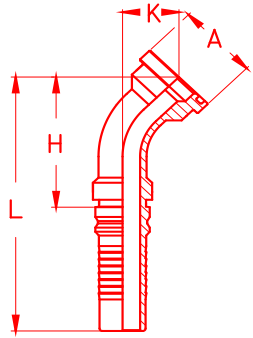
SFL-6



			Slang / tuyaux		Flens/flasque	Afmetingen			
			Inch	mm		H	L	D	A
			1/2"	13	1/2"	49,5	82,5	13	32
			1/2"	13	3/4"	56	89	19	41
			5/8"	16	1/2"	53	89		32
			5/8"	16	3/4"	59,5	95,5		41
			3/4"	20	1/2"	45,5	86,5		32
			3/4"	20	3/4"	60	101	19	41
			3/4"	20	1"	62,5	104	25	48
			1"	25	3/4"	61	116		41
			1"	25	1"	66,5	122	25	48
			1"	25	1 1/4"	70,5	126	32	54
			1 1/4"	32	1"	66	127		48
			1 1/4"	32	1 1/4"	71	132	32	54
			1 1/4"	32	1 1/2"	80,5	141	38	64
			1 1/2"	40	1 1/2"	81	152	38	64
			1 1/2"	40	2"	100	171	50	79
			2"	50	2"	100	176	50	79

PERSKOPPELINGEN / RACCORDS A SERTIR

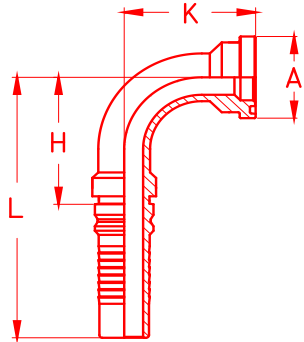
SFL-6 - 45°



			Slang / tuyaux		Flens/flasque	Afmetingen				
			Inch	mm		H	L	K	D	A
			1/2"	13	1/2"	57	90	21	13	32
			1/2"	13	3/4"	63	96	27	19	41
			5/8"	16	1/2"	49	85	47		32
			5/8"	16	3/4"	49	85	55		41
			3/4"	20	1/2"	58	99	52		32
			3/4"	20	3/4"	66,5	108	27	19	41
			3/4"	20	1"	71	112	33	25	48
			1"	25	3/4"	74	129	70		41
			1"	25	1"	85	140	36	25	48
			1"	25	1 1/4"	90	145	41	32	54
			1 1/4"	32	1"	92	153	84		48
			1 1/4"	32	1 1/4"	101	162	41	32	54
			1 1/4"	32	1 1/2"	105	166	45	38	64
			1 1/2"	40	1 1/2"	116	187	46	38	64
			1 1/2"	40	2"	127	198	57	50	79
			2"	50	2"	153	229	62	50	79

PERSKOPPELINGEN / RACCORDS A SERTIR

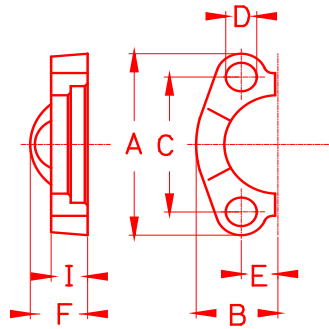
SFL-6 - 90°



			Slang / tuyaux		Flens/flasque	Afmetingen				
			Inch	mm		H	L	K	D	A
			1/2"	13	1/2"	39,5	72,5	42	13	32
			1/2"	13	3/4"	39,5	72,5	50	19	41
			5/8"	16	1/2"	49	85	47		32
			5/8"	16	3/4"	49	85	55		41
			3/4"	20	1/2"	58	99	52		32
			3/4"	20	3/4"	55,5	96,5	58	19	41
			3/4"	20	1"	55,5	96,5	64	25	48
			1"	25	3/4"	74	129	70		41
			1"	25	1"	72,5	128	75	25	48
			1"	25	1 1/4"	72,5	128	81	32	54
			1 1/4"	32	1"	92	153	84		48
			1 1/4"	32	1 1/4"	89,5	151	87	32	54
			1 1/4"	32	1 1/2"	89,5	151	93	38	64
			1 1/2"	40	1 1/2"	105	174	99	38	64
			1 1/2"	40	2"	105	175	115	50	79
			2"	50	2"	137	213	133	50	79

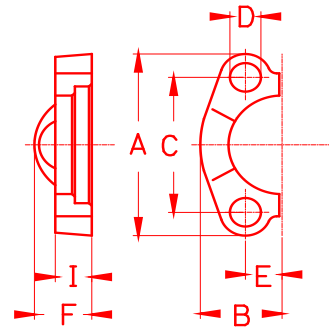
PERSKOPPELINGEN / RACCORDS A SERTIR

FLENS 3000 PSI



				Flens	Afmetingen						
				Flasque	A	B	C	D	E	F	I
				1/2"	54	23	38	9	8,7	13	19
				3/4"	65,1	26,2	48	11	11	14	22
				1"	69,8	29,4	52	11	13	14	22
				1 1/4"	79,4	36,5	59	11	15	14	22
				1 1/2"	93,7	41,3	70	14	18	16	26
				2"	102	48,4	78	14	21	16	26

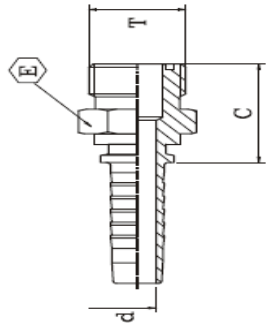
FLENS 6000 PSI



				Flens	Afmetingen						
				Flasque	A	B	C	D	E	F	I
				1/2"	56,3	23,8	41	9	9,2	16	22
				3/4"	71,4	30,2	51	11	12	19	29
				1"	80,9	34,9	57	13	14	22	37
				1 1/4"	95,2	38,9	67	15	16	24	40
				1 1/2"	113	47,6	79	17	18	27	46
				2"	133	57,1	97	21	22	37	56

PERSKOPPELINGEN / RACCORDS A SERTIR

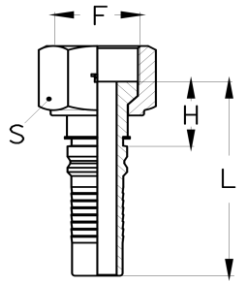
ORFS - M



			Slang / tuyaux		Draad / filet	Afmetingen		
			Inch	mm	F	H	L	S
			1/4"	6	9/16" - 18	23,5	52,0	17
			1/4"	6	11/16" - 16	26	54,5	19
			5/16"	8	11/16" - 16	26	54,5	19
			3/8"	10	11/16" - 16	26	56,5	19
			3/8"	10	13/16" - 16	28	58,5	22
			3/8"	10	1" - 14	32,5	63,0	27
			1/2"	12	13/16" - 16	29	62,0	22
			1/2"	12	1" - 14	33,5	66,5	27
			1/2"	12	1 3/16" - 12	35	68,0	32
			5/8"	16	1" - 14	33,5	69,5	27
			5/8"	16	1 3/16" - 12	35	71,0	32
			3/4"	20	1 3/16" - 12	36	77,0	32
			3/4"	20	1 7/16" - 12	36,5	77,5	41
			1"	25	1 7/16" - 12	38	93,0	41
			1 1/4"	32	1 11/16" - 12	40	101,0	46
			1 1/2"	40	2" - 12	43	113,5	55

PERSKOPPELINGEN / RACCORDS A SERTIR

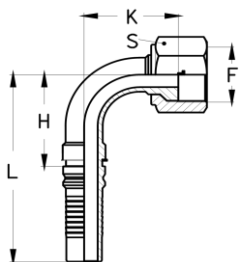
ORFS



			Slang / tuyaux		Draad / filet	Afmetingen		
			Inch	mm	F	H	L	S
			1/4"	6	9/16" - 18	21	49,5	17
			1/4"	6	11/16" - 16	23	51,5	22
			5/16"	8	11/16" - 16	23	51,5	22
			3/8"	10	11/16" - 16	23	53,5	22
			3/8"	10	13/16" - 16	26	56,5	24
			1/2"	12	13/16" - 16	30	59,5	24
			1/2"	12	1" - 14	33	63,0	30
			1/2"	12	1 3/16" - 12	30	66,0	36
			5/8"	16	1" - 14	30	66,0	30
			5/8"	16	1 3/16" - 12	33	69,0	36
			3/4"	20	1 3/16" - 12	33,5	74,5	36
			3/4"	20	1 7/16" - 12	34,5	75,5	41
			1"	25	1 7/16" - 12	35,5	90,5	41
			1 1/4"	32	1 11/16" - 12	36	97,0	50
			1 1/2"	40	2" - 12	36,5		60

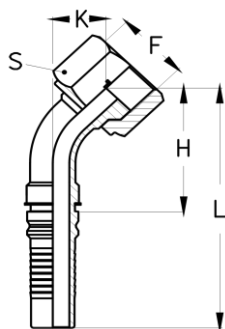
PERSKOPPELINGEN / RACCORDS A SERTIR

ORFS - 90



		Slang / tuyaux		Draad / filet	Afmetingen			
		Inch	mm	F	H	L	K	S
		1/4"	6	9/16" - 18	24	52,0	21	17
		1/4"	6	11/16" - 16	24	52,0	24	22
		5/16"	8	11/16" - 16	31	59,0	27	22
		3/8"	10	11/16" - 16	34	64,0	30	22
		3/8"	10	13/16" - 16	34	64,0	33	24
		1/2"	12	13/16" - 16	41	74,0	36	24
		1/2"	12	1" - 14	41	74,0	39	30
		1/2"	12	1 3/16" - 12	41	74,0	42	36
		5/8"	16	1" - 14	49	85,0	44	30
		5/8"	16	1 3/16" - 12	49	85,0	47	36
		3/4"	20	1 3/16" - 12	58	99,0	52	36

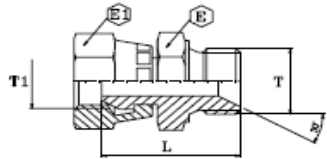
ORFS - 45



		Slang / tuyaux		Draad / filet	Afmetingen			
		Inch	mm	F	H	L	K	S
		1/4"	6	9/16" - 18	24	52,0	21	17
		1/4"	6	11/16" - 16	24	52,0	24	22
		5/16"	8	11/16" - 16	31	59,0	27	22
		3/8"	10	11/16" - 16	34	64,0	30	22
		3/8"	10	13/16" - 16	34	64,0	33	24
		1/2"	12	13/16" - 16	41	74,0	36	24
		1/2"	12	1" - 14	41	74,0	39	30
		1/2"	12	1 3/16" - 12	41	74,0	42	36
		5/8"	16	1" - 14	49	85,0	44	30
		5/8"	16	1 3/16" - 12	49	85,0	47	36
		3/4"	20	1 3/16" - 12	58	99,0	52	36

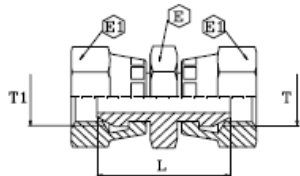
Adapters/Adapteurs

EST m - f



				Draad / Filet	Afmetingen		
				F	L	C1	C2
				1/4" - 19	38	19	19
				3/8" - 19	44	22	22
				1/2" - 14	51	27	27
				3/4" - 14	61	32	32
				1" - 11	65	40	40

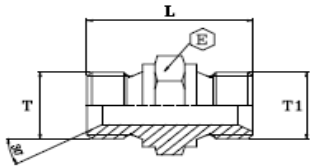
EST f - f



				Draad / Filet	Afmetingen		
				F	L	C1	C2
				1/4" - 19	38	19	19
				3/8" - 19	44	22	22
				1/2" - 14	51	27	27
				3/4" - 14	61	32	32
				1" - 11	65	40	40

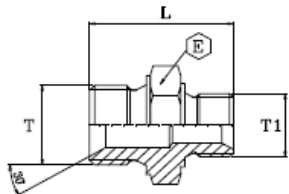
Adapters/Adapteurs

EST m - m



				Draad / filet	Afmetingen	
				F	L	C
				1/4" - 19	29	19
				3/8" - 19	33	22
				1/2" - 14	39,5	27
				3/4" - 14	44	32
				1" - 11	50	40
				1 1/4" - 11	56,5	50
				1 1/2" - 11	56,5	55
				2" - 11	69	70

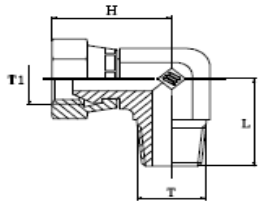
EST m - m RED



		Draad / Filet		Afmetingen	
		F1	F2	L	C
		3/8" - 19	1/4" - 19	32	22
		1/2" - 14	1/4" - 19	35	27
		1/2" - 14	3/8" - 19	37	27
		3/4" - 14	3/8" - 19	40	32
		3/4" - 14	1/2" - 14	41	32
		1" - 11	1/2" - 14	45	40
		1" - 11	3/4" - 14	48	40
		1 1/4" - 11	3/4" - 14	52	50
		1 1/4" - 11	1" - 11	54	50
		1 1/2" - 11	3/4" - 14	53	55
		1 1/2" - 11	1" 11	55	55

Adapters/Adapteurs

EST m - f 90°



		Draad / Filet		Afmetingen		
		F1	F2	H	K	S
		3/8" - 19	3/8" - 19	34	31,5	22
		1/2" - 14	1/2" - 14	40	36	27